

SAN LUIS OBISPO

REP

JAN 13
THROUGH
JAN 22

A WRINKLE IN TIME



by

MADLINE L'ENGLE

adapted by

JAMES SIE

Wilda Rosene

Show Sponsor

Joan Gellert Sargen

Show Sponsor

Bette Kulp

Show Director Sponsor

A Wrinkle in Time is produced by special arrangement with Crosswicks, Ltd. and Stage Partners.
(www.yourstagepartners.com)

*Wouldn't you rather
Hear the Wolf
before the wolf hears you?*

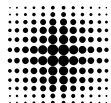


Helping You Hear the Things You Love

*Call us today
for your consultation*

805 541-1790

www.KarenScottAudiology.com



Karen M
Scott AuD

audiology • hearing aids

Thank you to our Sponsors

Our sponsors are the cornerstone for absolutely everything this theatre brings to our community. Their early, generous and ongoing support provides stability and the funding necessary to make professional live theatre thrive in downtown San Luis Obispo.

Please join us in thanking the Season Sponsors listed below and all the generous show and program sponsors recognized throughout our season.

Vanguard Sponsor



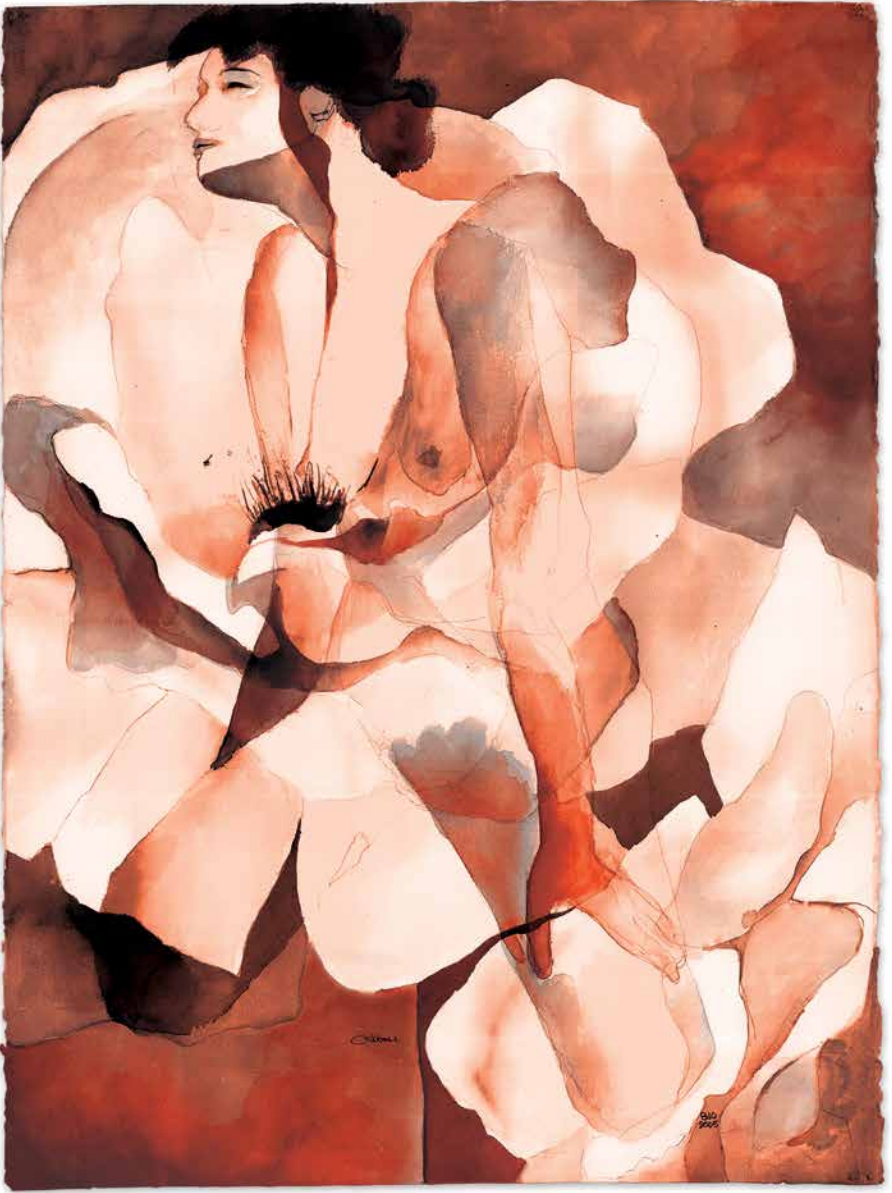
Season Sponsors

NewTimes



"Theater is a mirror, a sharp reflection of society."

— YASMINA REZA



"when you change the way you look at things
the things you look at change"
~ Wayne Dyer

barbara-jo osborne

A R T I S T

FINE ART 805-215-4115



Live theatre in downtown SLO

San Luis Obispo Repertory Theatre is a professional, nonprofit, regional theatre that has been giving theatre to the Central Coast for over 76 years!

slorep.org

Show Sponsor



Wilda Rosene

Wilda has been involved with the San Luis Obispo Little Theatre, now SLO REP, for more than 30 consecutive years. Since 1992 she has served as a volunteer, staff member, Treasurer, Secretary and three-time Board President. Wilda loves living in San Luis Obispo and is dedicated to community service and to supporting the performing arts. Last season Wilda was the generous show sponsor for *Mary Poppins JR*, and in previous years she has sponsored ACT's *The Importance of*

Being Earnest, *The Little Women of Orchard House*, *Cinderella*, *Pinocchio*, *The Jungle Book JR*. and, in 2013, the Mainstage Season Show *Enchanted April*. In 2012, she donated the funds that allowed us to purchase the mini-marquee located outside of the box office. This season she is very happy to be an ACT Show Sponsor for *A Wrinkle in Time*. Wilda has enjoyed watching SLO REP grow and prosper over the last several years and looks forward to serving the organization for many years to come!



Commercial and Residential

Carpet Cleaning
House Cleaning
Tile and Grout Cleaning
Hardwood Floor Cleaning
Floor Cleaning

Serving the Central Coast for 14 years

805-801-4787 | CUESTACLEANING.COM

Show Sponsor

Joan Gellert-Sargen

Joan moved to the Central Coast from the Bay area in 1992 and wasted no time before finding numerous ways to give of her time, talents and treasure to help make our community an even better place to live, work and play. One would be hard-pressed to find a nonprofit organization in San Luis Obispo County that has not benefited from Joan's philanthropic support. From French Hospital to the YMCA, Cal Poly Arts to 40 Prado, Cuesta



College to the Performing Arts Center, the Family Care Network to SLO Symphony, Joan has supported them all. Over the years she has been recognized for her philanthropy with several accolades including the Philanthropist of the Year Award from Wilshire Health and Community Services, the Red Cross Woman of Distinction Award, the Cuesta College President's Award as Outstanding Volunteer of the Year, the Circle of Sharing Award from Family Care Network and the Community Service Award from the Avila Beach Civic Association.

Joan has also served on the Board of Directors for the Foundation for the Performing Arts Center and the Central Coast Women's League and on Cuesta College's Friends of the Cultural and Performing Arts Center Council.

SLO REP is thrilled and grateful to have Joan's support this season for our Academy of Creative Theatre production of *A Wrinkle in Time*.

Get Outside

The Central Coast Guide to Everything Outside

Summer/Fall Issue Out Now



A New Times Media Group Special Publication

NewTimesSLO.com • 805-546-8208

NewTimes Sun



**FIBER
INTERNET
HOSTED VOICE**

Astound
Business Solutions
Powered by **DIGITALWEST**

Jeff Buckingham
Jeff.Buckingham@astound.com
805.545.5100
www.digitalwest.com



STUDENT ATHLETE MOVERS



BE MOVED BY CHAMPIONS



ATHLETES

We are strong, clean-cut student athletes.



SPEED

We JOG when NOT carrying your items, saving you time and money.



SATISFACTION

We are the only moving company that offers a 100% satisfaction guarantee.

(805) 544-6328

[MEATHEADMOVERS.COM](https://www.meatheadmovers.com)

@MEATHEADMOVERS



Where possibilities become *possible*

Together we can expand the possibilities
for *your* business!



AMERICAN RIVIERA BANK
Bank on *better.*



Visit us at
AmericanRiviera.Bank
805.965.5942



KCBX *fm*
Central Coast Public Radio

NPR. Local Talk. Great Music.

90.1 SANTA MARIA / SAN LUIS OBISPO
89.5 SANTA BARBARA • 90.9 SANTA YNEZ
95.1 LOMPOC • 91.7 SO MONTEREY COUNTY

kcbx.org



Support Live Theatre Today

Did you know that ticket sales cover only a little more than half of what you see on stage? Your generosity can make a difference! Become a donor today and join a community of SLO REP supporters.

STAGE MANAGER \$100+

- Your name listed in every playbill

STAR \$250+

- All above benefits
- Complimentary drink coupon at SLO REP bar

DIRECTOR \$500+

- All above benefits
- Complimentary SLO REP wine tumbler (to be picked up at theatre)

**According to IRS regulations, tangible benefits, such as complimentary tickets, will be detailed on your donation receipt. Any part of these benefits may be waived, if desired. If your contribution comes from a donor-advised fund or IRA, these benefits are not permitted.*

San Luis Obispo Repertory Theatre is a nonprofit 501(c)3 charitable organization. Donations are tax deductible as allowed by law. Federal Tax ID# 95-2556678

PRODUCER \$1,000+

- All above benefits
- An invitation to the Major Donor Reception and to other special events
- Concierge ticketing service before sales are open to the public
- Four (4) complimentary tickets to any show

EXECUTIVE PRODUCER \$2,500+

- All previous benefits
- Two (2) additional complimentary tickets to any show

ANGEL \$5,000+

- All Executive Producer benefits plus special custom benefits designed just for you

The advertisement is a composite image. On the left, there are two images of modern fireplaces: the top one is a 'Net Zero Fireplace' with a blue flame, and the bottom one is a traditional wood-burning fireplace with a bright orange fire. In the center is the 'PACIFIC ENERGY COMPANY' logo, which includes a stylized sun icon and the text 'C O M P A N Y' below it. Below the logo are two icons: a flame for 'Fireplaces' and a sun for 'Solar Electric'. At the bottom center, the contact information is listed: '2121 Santa Barbara Ave', '805-544-4700', 'www.alteryouenergy.com', and 'MODERNIZE'. On the right side, there is an image of a large array of solar panels installed on a roof, with the text 'Solar and Battery Systems' above it.

About the Author



Madeleine L'Engle (Author)

(November 29, 1918 – September 6, 2007) was an American writer of fiction, non-fiction, poetry, and young adult fiction, including *A Wrinkle in Time* and its sequels: *A Wind in the Door*, *A Swiftly Tilting Planet*, *Many Waters*, and *An Acceptable Time*. Her works reflect both her Christian faith and her strong interest in modern science.

[Learn more about L'Engle.](#)
(from Wikipedia)

About the Novel

First published in 1962, *A Wrinkle in Time* won the Newbery Medal, the Sequoyah Book Award, the Lewis Carroll Shelf Award, and was runner-up for the Hans Christian Andersen Award. The main characters – Meg Murry, Charles Wallace Murry, and Calvin O'Keefe – embark on a journey through space and time, from galaxy to galaxy, as they endeavor to rescue the Murrys' father and fight back The Black Thing that has intruded into several worlds. (from Wikipedia)

Thank you to our "Toast of the Town" Wine Partner!

NINER
WINE ESTATES

ninerwine.com

2400 HIGHWAY 46 WEST | PASO ROBLES, CA

Director's Bio



Shannon Peters (Director) is thrilled to be making her directorial debut with SLO REP! She was last seen on the SLO REP stage this summer in *Xanadu* as Melpomene/Medusa. Other favorite credits include Maggie in *Cat on a Hot Tin Roof* (USU), Viola in *Twelfth Night* (USU) and the Actress in *Baskerville: A Sherlock Holmes Mystery* (Lyric Repertory Theatre). A huge thank you to Kerry DiMaggio and Kevin Harris for this opportunity. She is incredibly grateful for her parents' unconditional love and support of the arts!

Director's Notes

Madeleine L'Engle's *A Wrinkle in Time*, though not a story I recall having a strong connection with as a child, has swiftly and surely secured a place in my heart as a young adult and artist. Ms. L'Engle seemed to sum up my life's motto so simply: "The only way to cope with something deadly serious is to try and treat it a little lightly." It is so easy, especially given, I'll say it, the less than inspiring state of the world, to succumb to our own personal "dark thing", to allow hate to overpower love, to isolate and separate from loved ones.

A Wrinkle in Time reminds us, much like Huey Lewis and the News, in the power of love. The love and unspoken connection between siblings. The love found in relationships of all kinds - be that between parent and child, child and magical being that may or may not be a star reincarnate, or the love you discover for yourself. "No one saves us but ourselves. Buddha."

Pair this with a group of exceptional, vulnerable, collaborative young creatives who are reassured that "their faults will come in handy here" and a truly magical artistic experience can grow. "It is a difficult thing, what we will be asking of you, but we are confident that you can do it." And they surely have done it. I hope you find comfort, joy and a sense of childlike wonder as we wrinkle in time together.



A WRINKLE IN TIME



by

MADÉLINE L'ENGLE

adapted by

JAMES SIE

Wilda Rosene

Show Sponsor

Joan Gellert Sargen

Show Sponsor

Bette Kulp

Show Director Sponsor

**Special Thanks to Kelly Fidopiastis,
Ryan Loyd, and Suzy Newman**

A Wrinkle in Time is produced by special arrangement with Crosswicks, Ltd. and Stage Partners.
(www.yourstagepartners.com)

ACT ONE

Scene 1	Earth and Thereabouts
Scene 2	Into the Woods
Scene 3	Uriel
Scene 4	The Happy Medium's Cave
Scene 5	Camazotz Outskirts

There will be one 15 minute intermission

ACT TWO

Scene 1	Camazotz
Scene 2	Central Central Intelligence
Scene 3	Father's Prison
Scene 4	IT
Scene 5	Ixchel
Scene 6	Beast Home
Scene 7	Camazotz and Home

Cast of Characters

Mother, Happy Medium, Camazotzian Child, Ensemble	Sadie Badger
Meg	Charley Beck
Charles Wallace	Maxine Castillo
Red Eyes, Ensemble	Emily Gillham
Mrs. Who, Ensemble	Claire Guyader
Father, Principal Jenkins, Ensemble	Avery Johnson
Aunt Beast, Postmistress, Camazotzian, Ensemble	Sophie Kirby
Bully, Camazotzian Child, Ensemble	Avery Magon
Mr. Which, Ensemble	Alex Miller
Calvin	Orion Slaughter
Aunt Beast, Teacher, Camazotzian, Ensemble	Lydia Steckling
Mrs. Whatsit, Ensemble	Frida Vega

Artistic Team

Director	Shannon Peters
Stage Manager	Lindsay Smith
Backstage Manager	Lester Wilson
Costume Design	Cheryl Nacario
Sound Design	Kerry DiMaggio
Lighting Design	Kevin Harris
Production Assistant	Isabel Torres

About the Cast



Charley Beck (Meg Murry) is overjoyed to be back on SLO REP's stage. Some past shows with SLO REP include *Macbeth* (Donalbain), *The Little Mermaid JR.* (Flounder), and a staged reading of *Charlotte's Web* (Wilbur). She is also a part of the SLO High School's Performing Arts Company and has performed in *Radium Girls* (Grace Fryer), *Clue* (Mr. Green), the ensemble of *The Wizard of Oz*, and in the virtual productions of *The Party Hop* (Janeya), and *Much Ado About Nothing* (Margaret). Charley will appear next in SLO High's *Mamma Mia!* Thanks for coming and enjoy the show!



Sadie Badger (Mother, Happy Medium, Camazotzian) has been in love with theater for a long time but really became, as her sister would say, a "Theater Kid" when she first started getting involved with SLO REP. Before moving to SLO, Sadie would have been in her elementary production of *Frozen Jr.* (Little Anna), but it was canceled due to COVID. More recently she has been a Munchkin in SLO High's *The Wizard of Oz* with her middle school choir, and joined a SLO REP summer camp musical this last year. When she is not practicing acting she is most likely playing her ukulele while singing "Somewhere Over the Rainbow".



Maxine Rae Castillo (Charles Wallace) is excited to make her debut on the SLO REP stage! She began her theater journey as Simba in *The Lion King* and played the carpenter in *The Fortune Tellers*. When not working on a script, Maxine can be found reading books, hiking, and building with Lego.



Emily Gillham (Red Eyes/Tesser Ensemble Captain) is so excited to be back on the SLO REP stage again! While she has been in two musicals previously, (*Mary Poppins Jr.* and *The Little Mermaid Jr.*), *A Wrinkle in Time* is her first play. She is a senior in high school. In her spare time, she likes to paint, knit, tap dance, sing, and take care of her three baby goats, Cedar, Rose, and Spruce Wayne. She hopes that you enjoy the show and remember... There is such a thing as a TESSERACT!

About the Cast



Claire Guyader (Mrs. Who) is thrilled to be back with SLO REP for her second drama this season. Other credits on the SLO REP stage include Esther Jane in *A Christmas Story*, Michael Banks in *Mary Poppins, Jr.* and Fern in *Charlotte's Web* as well Michael Darling in *Peter Pan* and Brigitta/Kurt Von Trapp understudy in *The Sound of Music* with PCPA - Pacific Conservatory Theatre. When not performing, Claire enjoys hiking, soccer, piano, and Rubik's cubing. She also writes a weekly gardening newsletter that has raised nearly \$10,000 for the SLO County Food Bank.



Sophie Kirby (Aunt Beast, Camazotzian, Postmistress, Tesser Ensemble) is delighted to be joining ACT for her first production at SLO REP. Although this is her first show with this theatre, she has been doing theatre for 6 years. Previously, she has been in *Radium Girls* (Diane Roeder), *Pirates of Penzance* (Mabel), *East of the Sun and West of the Moon* (Lara), and *The Wizard of Oz* (Aunt Em). In the spring, she will also be playing the role of Sophie Sheridan in *Mamma Mia!* She would like to thank her mom, dad, Maya, and Hannah.

2023 SEASON!

LUMBERJACKS <i>in Love</i> Book and Lyrics by Fred Alley Music by James Kaplan Story by Fred Allen and James Kaplan February 3rd - March 26th	Sherlock Holmes AND THE FINAL PROBLEM March 31st - May 21st	GOLD FEVER AT THE ROUGH AND READY July 21st - September 10th
under the BOARDWALK May 26th - July 16th	MUMMY Dearest September 15th - November 12th	Holiday Extravaganza November 17th - December 31st

CONTACT US 805-489-2499
info@americanmelodrama.com
1863 Front St. Oceano, CA 93445

About the Cast



Avery Johnson (Father) is delighted to make their first appearance on the SLO REP stage! Avery is a sophomore at San Luis Obispo High School, and has been involved with four of their productions; beginning their acting career this year in *Radium Girls* (Jack Youngwood), and previously working as stage crew for *CLUE!*, *Wizard of Oz*, and the *24 Hour Musical*. Avery would like to thank their family for encouraging their presence in performing arts and providing support



Avery Magon (Bully, Camazotzean child) started acting classes with the ACT program when she was around 5. As she got older she continued the classes and fell in love with acting. She has done numerous plays and musicals including *Aristocats* (Thomas O'Malley) and *Jungle Book* (Colonel Hathi). Now at age 10, she is in her first big production. Avery is so excited to be doing this production with a real set!!! A big thanks to my family who support me and come to almost every show. Especially to my parents who paid for me to do these shows.



Alexander Miller (Mr. Which) has been doing theater in some form with SLO REP for around 7 years! He really, really missed doing shows during the pandemic and is so excited to be back. If you've ever been to any SLO cafe you've probably seen them either working there or patronizing. You might find Alex crocheting or reading in a corner if you haven't found him in a theater or a cafe; though he's been known to do those things in cafes and backstage too. They hope you love the show as much as they do!



Orion Slaughter (Calvin) is excited to begin his theatrical career with SLO REP and hopes that *A Wrinkle In Time* is only the beginning. Orion has always loved acting but has more recently considered taking it on as a profession. He absolutely loves the stage, and hopes to eventually take part in a major musical, such as *Hamilton* or *Newsies*. His other interests include singing, guitar, learning bass, and playing water polo. He would like to thank his family for supporting him through this venture, and to thank you, the audience, for coming to see this play.

About the Cast



Lydia Steckling (Aunt Beast 2, Teacher, Camazotzian, Tesser Ensemble) an eighth grader is thrilled to make her first appearance on the SLO REP stage! She has been involved in theatre since she was 8 years old and has been part of many of SLO REP's ACT camps such as *The Lion King* (Scar) and *Peter and the Starcatcher* (Prentice). In addition to theatre, Lydia loves playing the piccolo, flute, and piano. She also loves crocheting and a good book. She wants to thank her parents for tirelessly driving her to rehearsals, and hopes you enjoy the show!



Frida Vega (Mrs. Whatsit) is a student at San Luis Obispo High School who is very excited to be performing at the SLO REP Theatre. Previously, she has performed on this stage as "The Black Stache" (*Peter and the Starcatcher*), at The Great American Melodrama as Martha Crachit (*A Christmas Carol 2021*), and you may even recognize her as The Scarecrow from SLO High's production of *The Wizard of OZ*. We hope you enjoy the show!



Visit our shop!

3566 South Higuera #100
San Luis Obispo, CA 93401

coastalpeakscoffee.com

Open 7 days a week
Mon–Fri: 6–6, Sat–Sun: 7–5

About the Artistic Team

Lindsay Smith (Stage Manager) Is a senior at SLOHS who spends most of her time in theatres. After years of acting in such roles as The Wizard (*The Wizard of Oz*) and Mrs. White (*CLUE!*), and shows such as *Macbeth*, *The Little Mermaid Jr*, and *Rent*, Smith has found her passion in direction. Last year she directed *Much Ado About Nothing* for the SLOHS Performing Arts Co. (canceled due to COVID), and expects to pursue directing in college. On the rare occasion she is not busy with theatre she loves to read, listen to music, or draw. She hopes you enjoy the show!

Lester Wilson (Backstage Manager) received his B.A. in Theatre Arts & English at Cal Poly State University, has been involved with many theatre companies on the Central Coast, and Los Angeles area performing, designing, and directing. Some of his favorite roles include Nicely Nicely Johnson in *Guys & Dolls*, Baloo The Bear in *The Jungle Book*, the title role in *You're A Good Man Charlie Brown*, and The Genie of the Lamp in Disney's *Aladdin*. He's worked with such Improv groups as The Groundlings, Upright Citizens Brigade, & iO West. He is also a teacher with Academy of Creative Theatre (ACT) at SLO REP, a director at AGHS Theatre Company, and Improv Coach for award winning AGHS Improv Team: Grin & Bare It. He enjoys all aspects of theatre and loves helping students develop and hone their skills while broadening their horizons as people and artists, it's the power of theatre. The world is a stage, enjoy it!

Cheryl Nacario (Costume Design) is a Costume Designer and hair/makeup artist based on the Central Coast of California. While her early career was as a ballroom dancer/instructor and children's portrait photographer, she always had a passion for beauty in hair & makeup and costume design. She currently works as a costume designer based in Santa Barbara and has also ventured off to Paris and New York to explore her strength as a hair & makeup artist.

Kerry DiMaggio (Sound Design) A native of the Central Coast, Kerry has been involved in theatre since she was young, including many productions on the SLO REP stage as a performer, instructor, and director. Kerry holds a BA (with honors) in Theatre Arts from Cal Poly's Theatre and Dance Department, where her interest in teaching was piqued by a course in Children's Drama. Kerry has also trained with the Utah Shakespeare Festival, PCPA, and Cal State Fullerton's Musical Theatre program. Her passion for teaching young performers continues to grow, and she is honored to have served as SLO REP's Education Director for going on 12 years.

About the Artistic Team

Kevin Harris (Lighting Design) received his MFA in Directing from the University of Iowa (2007), his BFA in Acting from New York University (1996), and his California Teaching Credential from Chapman University. While at NYU, he spent three years at the Atlantic Theatre Company studying acting under David Mamet, William H. Macy, and Felicity Huffman; he also spent a year at Musical Theatre Works (CAP 21) learning the finer intricacies of “jazz hands”. Favorite roles at the Atlantic include *The Russian (Chess)*, *Alan Strang (Equus)*, *Jamie (The Last Five Years)*, *Orsino (12th Night)*, and *Rev. Hale (The Crucible)*. For several years, Kevin worked as a freelance director in L.O.R.T./Equity theatres across the nation. Favorite shows: *The Merry Wives of Windsor*, *The Comedy of Errors*, *The Exhibitionists*, *Militant Language*, *Woyzeck*, *Ghost Sonata*, *The Cherry Orchard*, *Man of la Mancha*, and several original plays which have gone on to be produced at the New York Theatre Workshop, The Public Theatre, The O’Neill, Cherry Lane, and many others. From 1999-2002 he was the Artistic Director of Centerpoint Theatre Group in San Luis Obispo, CA. In 2005, he traveled to the West Bank and Gaza Strip to co-write and direct an original play with Ashtar Theatre, Palestine’s only professional theatre company. The subsequent play, *The Era of Whales*, has been performed in Gaza, Ramallah, Nablus, Jerusalem, and several international theatre festivals. Kevin has taught at the University of Iowa, University of Chicago, and has led dozens of workshops on *A Practical Handbook for the Actor* across the country. Kevin feels privileged to be part of bringing live theatre to San Luis Obispo.

Isabel Torres (Production Assistant) is really happy to be back following back to SLO REP shows – *Xanadu!* and *Around the World in 80 Days*. Isabel has worked in technical theatre for many years as a light and music operator, stagehand, and stage manager for shows like *Beauty & The Beast*, *The Mousetrap*, *Newsies*, *Mamma Mia*, *39 Steps*, and *Happiest Show On Earth*.



Real estate for wherever you are in life©

*Playing our
role in your real
estate success*

Dawna Davies | Owner/Broker

805-544-5889 | DaviesCo.com

The Show MUST Go On!

Unforgettable Characters. Extraordinary Stories.
Since 1947.

SLO REP is grateful to all of our generous donors. Each and every gift is important to us! This list recognizes donors who have pledged or contributed \$100 or more between July 1, 2022 and Decemeber 31, 2022.



Season 2022-2023 Donors

Diamond Circle (\$25,000+)

City of San Luis Obispo
The MOCA Foundation

Emerald Circle (\$10,000+)

Astound Business Solutions
Powered by Digital West
The Couch Family
Bette Kulp
Catherine & Richard Luckett
Susan Minker
Pam & Mitch Nichter
Ann Robinson
Bernhard Singsen

Angels (\$5,000+)

Better Business
Financial Solutions
Janssen Youth & Youth
Sports Fund, Held at The
Community Foundation
San Luis Obispo County
Karen S. Kolba MD
Carol Kiessig
KSBY
Jeanne & Lawrence Lovelace
Larry & Jeanette Meek
New Times
RyLo Media Design,
Ryan C. Loyd
Subplot Studio

Executive Producers (\$2,500+)

Libbie Agran
The Bostrom Family
Central Coast Funds
for Children
Jerry & Sharynn Chirpich
Diane Dekker Clausen
Kathy Coull
Keith & Wendy George
Gina Kirk
Brendan V. & Kathryn L.
McAdams
Shannon & Douglas Murphy
Carol MacCurdy &
Tom Nuckols
JAMBA, Linda Ozawa
Olds & Jeff Olds
Jay & Nicole Raftery
George & Jane Roach
Joan Gellert Sargen
Michael & Maryellen Simkins
Phyllis Momtazee Snelling

Producers (\$1,000+)

American Riviera Bank
Gary Lawson & Tom Ammon
Karen Bailey
Seth & Chris Blackburn
Carol & Ray Boche
Coastal Peaks Coffee
Jayne & Steve Devencenzi
Daniel Freeman
Cindy Green & John Thomas

Cricket Handler &
Jerry Boots
Toni & Craig Kincaid
Marcia & John Lindvall Fund,
held at The Community
Foundation SLO County
Dianne N. Long
Jamie Magon
Barbara-Jo Osborne
Valerie Pallai
Terry Parry
Gigi & James Roark
Wilda Rosene
Marcia Scott
Cindy Green & John Thomas
Susan & Craig Updegrove
Marty Claus & Chip Visci
Ellie & Jermaine Washington
D. Rosh Wright Fund, a Fund
of The Community Foundation
San Luis Obispo County

Directors (\$500+)

Craig & Susan Armstrong
Sue & Rod Beckett
Clements Family Foundation
Dori Duke
Cyndee Edwards &
Matthew Talarico
Judy Hemenway &
Jonathan Fellows
Christine & Richard Greek
Luanne & Fabrizio Griguoli
Victoria Grostick
William E. & Ingrid Kelly

Ashala & Brian Lawler
Mary-Ann Maloof
Sandra & Michael Morris
Brian Newman
Shannon & Douglas Murphy
John Ozanich
Michael & Christy Palmer
Rotary Club of San Luis
Obispo de Tolosa
Priscilla & Hal Thilmony
Tom Weiss

Stars (\$250+)

Sandra Adams
Mary Baiamonte
Sharon & John Dobson
Elizabeth Dodder
Marilyn & Larry Gardner
Gail Gresham
Erik Justesen &
Ermina Karim
Claretta & Roger Longden
Sharon & Jerry Melson
The Minikel Family
Foundation
Jean & Matt Moelter
Randall Murray
Nancy & Donald Norton
Susan Piel
Nancy Piver
John Rolph
Bill & Carol Rust
Lynn Shaw
Alaine & Rich Steuk
Bob & Nanette Tarpinian
Denise Taylor & Neal
MacDougall

SLO REP is a 501(c)3 non-profit organization. Federal Tax ID#95-2556678. All donations are tax deductible, as allowed by law, and will be promptly and gratefully acknowledged.

Stage Managers (\$100+)

Rebecca & Joseph
Anastasio
Karen Bailey
Darlene & Russ Bik
Julia Bockmon
Gerald Bollmann
Lois & Sonny Brown
Jay Campbell
Carlyn Christianson
Brian & Erin Clausen
Jody Hovland & Ron Clark
Grace Crittenden
Wendy Daly
Maureen A Dresp
Sandy & John Dunn
Audrey Elliott
Christopher & Andrea
Edgington
Landy Fike & John Forsberg
Elizabeth Frost
Sarah Garcia
Nancy Grant
Bevelina Hardwick
Gary & Muriel Harkins
Judith Ann Jennings
Donna & Randy Johnson
Lisa Langere
Rosemarie & Adrian Leroy
Steve & Lori Lerian
Patricia Martinez
Paul & Robyn Metchik
Philip R Morris
Margaret O'Neill
Erin Ogren
Donna O'Shaughnessy
Naya & Kaz Pearson
Gregory & Zandra Peters
Roz Phillips
Yvonne Ramos &
Robert Smidt

Amy Reagle
Judith Resnick
Virginia Rodgers
Gail Ryff
Liz Stanley-Salazar
& John Salazar
Deb & John Spatafore
Lynn & Jon Sterner
Thomas & Linda Stuermer
Candace Splivalo
Meredith Takken
Patty & David Thayer
Kenneth & Nancy
Thompson
Debra Thompson
Elyse & Chris Ungar
Mary Blackler & Phil Wagner
Deborah & Jim Whitson
Janice Wolf
Ray Ramirez &
Gregory Zocher

Special Remembrances

**In Honor and Appreciation of
Jerry & Sharynn Chirpich**
by Kathy Coull

In Memory of Jules Hock
Catherine & Richard Luckett

In Honor of Burr Nissen
by Audrey Elliott

**In Honor of Alaine &
Richard Steuk**
by Judy Stark

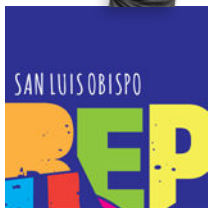
**In Honor of Chip Visci's
tireless service to SLO REP**
Sandi Sigurdson &
Steve McGrath

All donations listed have been pledged or received as of
December 31, 2022 for the 2022-23 season.

Every effort has been made to ensure the accuracy of this list. If you have any questions about your listing, please contact Chris McBride at chris@slopep.org.



Capital Campaign Donations



It's time. After many, many years of “flying beneath the radar” on our Capital Campaign, it is time to start sharing our good news! More details on our plans, our timeline, our partnership with the City of San Luis Obispo and much, much more will be coming out over the next several months. But for now, we're going to start recognizing all of the amazing supporters whose early and generous gifts and pledges, and their belief in the future of SLO REP, have brought us to where we are today: more than halfway to our goal!

Luminaries

City of San Luis Obispo
Anonymous
Harold J. Miossi
Charitable Trust

Headliners

The Hughes Charitable
Foundation
Bette Kulp

STARS

Libbie Agran
The Bostrom Family
Gina Kirk
Catherine and
Richard Luckett
Brendan V. & Kathryn
L. McAdams
Susan Minker
Pam & Mitch Nichter
Jane & George Roach
Ann Robinson
Lois & Duke Williams
Memorial Fund, Held at The
Community Foundation
San Luis Obispo County

Leading Roles

Diane Dekker Clausen
Steven B. Jobst, M.D. &
Dr. Jill E. Anderson
Dianne N. Long
The MOCA Foundation,
Mary Bianco
Linda Ozawa Olds
& Jeff Olds
Roy & Linda Rawlings
Michael & Maryellen Simkins
Marty Claus & Chip Visci

Supporting Roles

Kathy Coull
Deborah & Robert Stewart
Sharynn & Jerry Chirpich
Matthew & Joy Cottle
Wendy & Keith George
Carol Kiessig
Marcia Scott
Karen S. Kolba M.D.
The Orndorff Family
Foundation
Dick Morse & Mike Lyons

Ensemble Cast

The Ron Burkhart Fund
In Memory of Deb
Burnstine Bremner,
by M. Anne Spence
In Memory of Dorothy
DeVries, by Robert DeVries
Mary & John Frey
Jean & Andrew
Greensfelder Fund,
Held at The Community
Foundation, San Luis
Obispo County
Deborah Adams &
Michael Howard
Jan & Steven Marx
Shelagh Garren &
Alan Pietsch
Pierre Rademaker Design
Doreen Wetzels & Ron Regier
Wilda Rosene
Joan Gellert Sargen
Ellie & Jermaine Washington
In Honor of Richard
& Alaine Steuk

For more information on our Capital Campaign and how you can help build the future of live theatre on the Central Coast, please contact Director of Development, Patty Thayer at (805) 781-3889, ext. 15 or email patty@slorep.org.

Leave a Legacy of Live Theatre for the Future

Everyone can leave a legacy. Great or small, planned gifts through your financial or estate plans will ensure that the enjoyment and enrichment you've experienced at SLO REP is available to our community for years to come.

Please join us in a round of applause for these members of SLO REP's **Legacy Society** whose foresight and generosity will keep live theatre going strong in downtown San Luis Obispo for years and years to come.

Legacy Society

Jeff McKeegan & Steven deLuque

Kate Hines & Bryce Engstrom

Ray & Jaime Hatler

Brenda & Jules Hock

Lisa Langere

Catherine & Richard Lockett

Amey Hart & Stephen Lloyd-Moffett

Jeanne & Lawrence Lovelace

Pam & Mitch Nichter

Gail Ryff

Michael & Maryellen Simkins

Robert Lahr & Bruce Stuart

Brendan V. & Kathryn L. McAdams

William F. Mooney & Wilbur Wooster

For more information about joining our Legacy Society, please contact Patty Thayer at **(805) 781-3889, ext. 15 or patty@slorep.org**.

Building the Future

Thanks to the foresight, generosity and determination of Dr. Bernhard Singen, SLO REP has established an endowment fund for the future of live theatre in downtown SLO. This fund will grow as we grow, providing security and future funding, ensuring that this organization continues to survive and thrive for years to come. Many thanks to Dr. Singen for his generous \$20,000 seed gift for SLO REP's "Build the Future" Fund.

Endowment Fund Donors

Pam & Mitch Nichter

Dr. Bernhard Singen

To find out more about how you help to build the future of SLO REP through planned giving, please contact Patty Thayer at **(805) 781-3889, ext. 15 or patty@slorep.org**.



For more information about how you can join our family of supporters and support the future of live theatre in downtown San Luis Obispo, please contact Chris McBride at **(805) 781-3889, ext. 16 or email chris@slorep.org**.

Host Homes for Guest Artists



Got a spare room? A granny unit? A condo you're not using at the moment? Do you like meeting interesting people and supporting live theatre in downtown SLO? SLO REP utilizes a long-standing Host Home Program, which matches professional directors and actors with volunteer hosts for the duration of their time working at the theatre. Benefits of hosting a guest artist include complimentary tickets, acknowledgement in our playbill, invitations to special events and the chance to meet new friends and influence people!

Won't you join us in welcoming these amazing artists to our community? For more information about hosting a SLO REP guest artist, please contact Kevin Harris at kevin@slorep.org.

A promotional graphic for the news program 'WAKEUP WITH DAYBREAK' on KSBY 6 NEWS. The graphic features three hosts: Genelle Padilla in a yellow dress, Neil Hebert in a dark suit, and Vivian Rennie in a teal dress. The text includes the program title, broadcast schedule (Weekdays 5-7am), and streaming information (Streaming Free 24/7 on Roku, Apple TV, Fire TV, and Android TV).

WAKEUP WITH DAYBREAK
Weekdays 5-7am

KSBY 6 NEWS

Streaming Free 24/7
Roku Apple TV
firetv androidtv

GENELLE PADILLA
NEIL HEBERT
VIVIAN RENNIE

CAL POLY
arts

2022/2023 Season



MICHELLE WOLF
OCT. 21



CARLA MORRISON
OCT. 28

**THE BOOK OF
MORMON**

MAY 17, 18 & 19



ALAN CUMMING
NOV. 13



JANE LYNCH
DEC. 18

SEE THE **FULL PHENOMENAL LINEUP OF ARTISTS**
& PURCHASE YOUR SINGLE TICKETS STARTING AUG. 8
AT [CALPOLYARTS.ORG!](http://CALPOLYARTS.ORG)

**BRYCE
ENGSTROM
ARCHITECT**

(805) 235-3385

www.engstromarchitecture.com

Enjoy our signature dishes and drinks before and after the show!



I ❤️ the showbiz



1117 Chorro St., SLO | 805.544.7433
www.BlackSheepSLO.com

CLARK CENTER
FOR THE PERFORMING ARTS

487 Fair Oaks Ave
Arroyo Grande, CA 93420

IT'S OUR



CLARK CENTER
FOR THE PERFORMING ARTS
2022-2023 SEASON

20th
ANNIVERSARY
& EVERYONE
IS INVITED TO
THE PARTY!



TICKETS ON SALE AUG 1!
GET YOUR BROCHURE TODAY!
(805) 489-9444
www.clarkcenter.org

SAN LUIS OBISPO

REP

Gala Musical!



FEB 10
THROUGH
MAR 12

RING OF FIRE

THE MUSIC OF JOHNNY CASH



Contact

Box Office: (805) 786-2440
boxoffice@slorep.org
Business Office: (805) 781-3889

Box Office Hours

Wed-Fri 3 pm – 6 pm
Show Saturdays 3 pm – 5 pm
Will Call open 1 hour before
every show

Downtown Venue Address

888 Morro Street
San Luis Obispo, CA 93401

Empleo Street Campus

3533 Empleo Street
San Luis Obispo, CA 93401

Mailing Address

PO Box 122
San Luis Obispo, CA 93406

Board of Directors

Pam Nichter, President
Ellie Washington, Vice-President
Debbie Stewart, Treasurer
Michael Simkins, Secretary & Past President

Members

Jay Beck
Jerry Chirpich
Diane Clausen
Keith George
Dianne N. Long
Richard Luckett

Susan Minker
Jeff Olds
Wilda Rosene
Marcia Scott
Chip Visci

Staff

Kevin Harris
Managing Artistic
Director

Patty Thayer
Director of
Development & Capital
Campaign

Chris McBride
Director of Marketing
& Annual Giving

Suzy Newman
Marketing &
Development
Associate

Dave Linfield
Technical Director/
Scenic Designer

Allison Rajcevic
Volunteer Coordinator
& Front of House

Carey Blauvelt
Box Office Staff

Kerry DiMaggio
Education Director

Rachel Tietz
Assistant Education
Director

Vincent Lemos
Education Coordinator

Penny DellaPelle
Shannon Peters
Amanda Thayer
Lester Wilson
ACT Teaching Artists

Daniel Freeman
Sonja Jackson
Shannon Peters
Amanda Thayer
Melissa Walker-Scott
Assistant House
Managers

Mission

SLO REP strengthens theatre's cultural influence and enriches the Central Coast by producing professional theatre, nurturing artists and providing theatre education for children and adults.

Our Belief

Live theatre's powerful storytelling connects people in ways that open the mind, nourish the soul and illuminate our shared humanity.

Vision

To be a nationally recognized regional theatre that:

- Produces professional theatrical productions in a state-of-the-art facility.
- Strengthens the cultural vitality of the Central Coast, entertains audiences, nurtures artists, and cultivates future generations of theatre enthusiasts.
- Creates a strong and sustainable economic impact, attracting residents and visitors to downtown San Luis Obispo.

Our Commitment

Theatre plays a vital role in our culture and our community and has a responsibility to enact positive change through its work, practices, educational programs and policies. We at SLO REP are committed to diversity, equity and inclusion in all aspects of our work. To learn more about our commitment to you, our community and to ourselves, visit our Diversity, Equity and Inclusion webpage at www.slorep.org/about/diversity-and-inclusion

Land Acknowledgement: San Luis Obispo Repertory Theatre acknowledges with respect that the place we work and gather is located on the traditional land of the Northern Chumash people.

SLO REP is a proud member of:



Printing: Poor Richard's Press
Artwork: Subplot Studio
Photos/Video: RyLo Media Design, Ryan Loyd

**UP
NEXT**

An American tale about growing up
dirt-poor in the heartland of America.

FEBRUARY 10 - MARCH 12, 2023



RING OF FIRE

THE MUSIC OF JOHNNY CASH

Created by **RICHARD MALTBY, JR.** | Conceived by **WILLIAM MEADE**

Orchestrations by **Steven Bishop** and **Jeff Lisenby**

Ring of Fire was originally produced on Broadway by William Meade, CTM Productions,
Bob Cuillo, GFour Productions, and James B. Freyberg

Karen S. Kolba MD

Show Sponsor

Susan Minker

Show Sponsor

Pam & Mitch Nichter

Show Sponsors

Ann Robinson

Show Sponsor

**Sharynn &
Jerry Chirpich**

Show Director Sponsors

**Dianne N.
Long**

Choreographer Sponsor

**Cricket Handler &
Jerry Boots**

Musical Director Sponsors

**Carol Kiessig &
Bette Kulp**

Night on Fire Gala Sponsors

RING OF FIRE is presented through special arrangement with and all authorized performance materials are
supplied by Theatrical Rights Worldwide, 1180 Avenue of the Americas, Suite 640, New York, NY 10036.

www.theatricalrights.com