



FEB 10
THROUGH
MAR 12



RING OF FIRE

THE MUSIC OF JOHNNY CASH

Created by **RICHARD MALTBY, JR.** | Conceived by **WILLIAM MEADE**

Adapted from the Broadway Production by **Richard Maltby, Jr.** and **Jason Edwards**
Orchestrations by **Steven Bishop** and **Jeff Lisenby**

Ring of Fire was originally produced on Broadway by William Meade, CTM Productions,
Bob Cuillo, GFour Productions, and James B. Freyberg

Karen S. Kolba MD **Susan Minker** **Pam & Mitch Nichter** **Ann Robinson**

Show Sponsor

Show Sponsor

Show Sponsors

Show Sponsor

**Sharynn &
Jerry Chirpich**

Show Director Sponsor

**Dianne N.
Long**

Choreographer Sponsor

**Cricket Handler &
Jerry Boots**

Musical Director Sponsors

**Carol Kiessig &
Bette Kulp**

Night on Fire Gala Sponsors

RING OF FIRE is presented through special arrangement with and all authorized performance materials are supplied by Theatrical Rights Worldwide, 1180 Avenue of the Americas, Suite 640, New York, NY 10036.
www.theatricalrights.com

*Wouldn't you rather
Hear the Wolf
before the wolf hears you?*

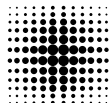


Helping You Hear the Things You Love

*Call us today
for your consultation*

805 541-1790

www.KarenScottAudiology.com



Karen M
Scott AuD

audiology • hearing aids

Thank you to our Sponsors

Our sponsors are the cornerstone for absolutely everything this theatre brings to our community. Their early, generous and ongoing support provides stability and the funding necessary to make professional live theatre thrive in downtown San Luis Obispo.

Please join us in thanking the Season Sponsors listed below and all the generous show and program sponsors recognized throughout our season.

Vanguard Sponsor



Season Sponsors

NewTimes



SUBPLOT STUDIO



Better
Business
Financial

"Theater is a mirror, a sharp reflection of society."

— YASMINA REZA



"when you change the way you look at things
the things you look at change"
~ Wayne Dyer

barbara-jo osborne

A R T I S T

FINE ART 805-215-4115

Artistic Director's Message

Welcome to SLO REP's GALA production of *Ring of Fire: The Music of Johnny Cash!*

Each season SLO REP strives to bring some of the greatest performers in the country to our intimate stage in San Luis Obispo. This year, we are thrilled to welcome a group of actor/musicians who have been seen across the nation in shows like: *Guys and Dolls*, *Million Dollar Quartet*, *Once*, *Buddy: The Buddy Holly Story*, *Million Dollar Christmas*, *The Marvelous Wonderettes*, and many more. We are so lucky to have them in our community and on our stage for *Ring of Fire*.

Thank you so much for your support, and always remember:



"I love songs about horses, railroads, land, Judgment Day, family, hard times, whiskey, courtship, marriage, adultery, separation, murder, war, prison, rambling, damnation, home, salvation, death, pride, humor, piety, rebellion, patriotism, larceny, determination, tragedy, rowdiness, heartbreak and love. And Mother. And God."

- Johnny Cash



Kevin Harris
Managing Artistic Director

Show Sponsors



Karen S. Kolba, MD

Karen S Kolba, MD retired after 35 years from her solo rheumatology practice in Santa Maria. Former dedicated canine office assistants Tango and Cricket report that they are finally getting all the attention they so richly deserve.



Susan Minker

Originally from New York, Susan has gradually (and gratefully) moved West, first to Tucson, Arizona where she was the only female partner in a group of 27 diagnostic radiologists, and then to the central coast, when she and her (now late) husband retired. Since moving here, Susan has served on the boards of the SLO Health Commission, the SLO Symphony, the SLO International Film Festival, and the Hearst Cancer Resource Center.

Susan saw her first play, the original Broadway production of *West Side Story*, when she was thirteen years old and was instantly in thrall. She acted (poorly) in college and has had minor roles in a couple of local productions (*Oklahoma!* with Chameleon Productions and *The Royal Family* with the Little Theatre). One of her only regrets in life is that she isn't a better actress. Had she been, she would have pursued acting instead of medicine as a career. Susan is thrilled that as a SLO REP board member and as a sponsor of this wonderful production of *Ring of Fire*, she is able to serve in some way to promote and support our wonderful local repertory theatre.

Susan lives in Los Osos with her two standard poodles, Benny and Coco.



Real estate for wherever you are in life®

*Playing our
role in your real
estate success*

Dawna Davies | Owner/Broker

805-544-5889 | DaviesCo.com

Show Sponsors

Pam and Mitch Nichter

Pam and her husband Mitch retired from their careers in the Bay Area in 2015 and relocated to the tiny town of Harmony. Both Nichters are passionate gardeners and enjoy working in their home gardens as well as volunteering time with the Master Gardeners of SLO County. Fans of live theatre, the Nichters sought a local theatre to enjoy and support, and to their delight discovered SLO REP.



A longtime board member of Berkeley Repertory Theatre and Marin Summer Theatre, Pam joined the SLO REP board in 2017. She is honored to be part of the team helping to nurture professional theatrical productions for the entertainment and enrichment of the public, and theatre education opportunities for youth. Pam strongly believes the entertainment and storytelling aspects of live theatre can provide transformative and thought-provoking opportunities for dialog with friends, family and communities.

Ann Robinson

Ann Robinson is a former Senior Manager at Adobe Systems and has donated her time in support of several non-profit organizations since relocating to San Luis Obispo. She currently serves as president of the San Luis Obispo Land Conservancy Board of Trustees. She was a founding member of the Women's Legacy Fund at The Community Foundation San Luis Obispo County, where she served as President of the Board for two years. She is also a past Board Member of Opera San Luis Obispo and a past President of the SLO Children's Museum.

Ann, and her late husband Lou, have always believed in giving back to the community through their volunteer efforts and financial support. As dedicated supporters of the arts, they have played a critical role in building a thriving community here on the Central Coast with theatre, art and music at its core. We miss Lou's no-nonsense personality and wicked sense of humor here at 888 Morro Street, but his memory lives on in our hearts.

Get Outside

The Central Coast Guide to Everything Outside



Winter/Spring
2023 available
February
through July

San Luis Obispo County: **New Times** 805-546-8208

Northern Santa Barbara County: **Sun** 805-347-1986

New Times Sun

NewTimesSLO.com



**FIBER
INTERNET
HOSTED VOICE**

Astound
Business Solutions
Powered by **DIGITAL WEST**

Jeff Buckingham
Jeff.Buckingham@astound.com
805.545.5100
www.digitalwest.com



STUDENT ATHLETE MOVERS



BE MOVED BY CHAMPIONS



ATHLETES

We are strong, clean-cut student athletes.



SPEED

We JOG when NOT carrying your items, saving you time and money.



SATISFACTION

We are the only moving company that offers a 100% satisfaction guarantee.

(805) 544-6328

[MEATHEADMOVERS.COM](https://www.meatheadmovers.com)

@MEATHEADMOVERS



Where possibilities become *possible*

Together we can expand the possibilities
for *your* business!



AMERICAN RIVIERA BANK
Bank on *better.*



Visit us at
AmericanRiviera.Bank
805.965.5942



KCBX *fm*
Central Coast Public Radio

NPR. Local Talk. Great Music.

90.1 SANTA MARIA / SAN LUIS OBISPO
89.5 SANTA BARBARA • 90.9 SANTA YNEZ
95.1 LOMPOC • 91.7 SO MONTEREY COUNTY

kcbx.org



Support Live Theatre Today

Did you know that ticket sales cover only a little more than half of what you see on stage? Your generosity can make a difference! Become a donor today and join a community of SLO REP supporters.

STAGE MANAGER \$100+

- Your name listed in every playbill

STAR \$250+

- All above benefits
- Complimentary drink coupon at SLO REP bar

DIRECTOR \$500+

- All above benefits
- Complimentary SLO REP wine tumbler (to be picked up at theatre)

**According to IRS regulations, tangible benefits, such as complimentary tickets, will be detailed on your donation receipt. Any part of these benefits may be waived, if desired. If your contribution comes from a donor-advised fund or IRA, these benefits are not permitted.*

San Luis Obispo Repertory Theatre is a nonprofit 501(c)3 charitable organization. Donations are tax deductible as allowed by law. Federal Tax ID# 95-2556678

PRODUCER \$1,000+

- All above benefits
- An invitation to the Major Donor Reception and to other special events
- Concierge ticketing service before sales are open to the public
- Four (4) complimentary tickets to any show

EXECUTIVE PRODUCER \$2,500+

- All previous benefits
- Two (2) additional complimentary tickets to any show

ANGEL \$5,000+

- All Executive Producer benefits plus special custom benefits designed just for you

The advertisement for Pacific Energy Company is divided into three main sections. On the left, there is a photograph of a modern fireplace with a blue flame, labeled "Net Zero Fireplaces". In the center, the company logo "PACIFIC ENERGY COMPANY" is displayed in a stylized font, with "PACIFIC" in large letters and "ENERGY" below it. Underneath the logo are two icons: a flame labeled "Fireplaces" and a sun labeled "Solar Electric". Below these icons, the company's address "2121 Santa Barbara Ave", phone number "805-544-4700", website "www.alteryouenergy.com", and the word "MODERNIZE" are listed. On the right, there is a photograph of solar panels installed on a roof, labeled "Solar and Battery Systems".



RING OF FIRE

THE MUSIC OF JOHNNY CASH

Created by **RICHARD MALTBY, JR.** | Conceived by **WILLIAM MEADE**

Adapted from the Broadway Production by **Richard Maltby, Jr.** and **Jason Edwards**

Orchestrations by **Steven Bishop** and **Jeff Lisenby**

Ring of Fire was originally produced on Broadway by William Meade, CTM Productions, Bob Cullio, GFour Productions, and James B. Freyberg

Karen S. Kolba MD

Show Sponsor

Susan Minker

Show Sponsor

Pam & Mitch Nichter

Show Sponsors

Ann Robinson

Show Sponsor

**Sharynn &
Jerry Chirpich**

Show Director Sponsor

**Dianne N.
Long**

Choreographer Sponsor

**Cricket Handler &
Jerry Boots**

Musical Director Sponsors

**Carol Kiessig &
Bette Kulp**

Night on Fire Gala Sponsors

RING OF FIRE is presented through special arrangement with and all authorized performance materials are supplied by Theatrical Rights Worldwide, 1180 Avenue of the Americas, Suite 640, New York, NY 10036.
www.theatricalrights.com

Cast of Characters

Vocals, Piano, Autoharp, Rhythm Jennifer Barnaba
Male Vocals, Acoustic and Electric Guitar,
Electric Bass, Cajon Mike Fiore
Vocals, Acoustic and Electric Guitar,
Electric Bass, Mandolin Steven Lasiter
Vocals, Acoustic and Electric Guitar,
Electric Bass, Cajon Matthew Staley
Vocals, Acoustic Guitar, Electric Bass, Rhythm Rachel Tietz

Creative Team

Director & Choreographer Kelly Fidopiastis
Musical Direction Steven Lasiter
Production Manager Isabel Torres
Scenic Design Dave Linfield
Costume Design Barbara Harvey Abbott
Lighting/Sound Design Kevin Harris
Sound Engineers Bill Gaines Audio
Prop Design Isabel Torres & Suzy Newman
Light Operator Alex Miller
Scenic Artist Lisa Langere



About the Cast



Jennifer Barnaba (Vocals, Piano, Autoharp, Rhythm) is so happy to be joining the SLO REP family for *Ring of Fire*! Jennifer is originally from Ohio, but is usually traveling the country performing. She is a huge Johnny Cash fan, and has written her own Johnny & June tribute show. Favorite credits include: *Next to Normal* (Natalie), *Into the Woods* (Cinderella), *Footloose* (Ariel), *The Addams Family* (Wednesday), *A Little Night Music* (Anne), *Hank Williams: Lost Highway*, *The Buddy Holly Story*, *Saturday Night Fever*, *The Marvelous Wonderettes*, and the *Million Dollar Quartet* National Tour. Much love to Steven. May the circle be unbroken!



Mike Fiore (Vocals, Acoustic and Electric Guitar, Electric Bass, Cajon) is so pleased to be back rockin' and rollin' on the SLO REP stage. A Central Coast native and graduate of PCPA - Pacific Conservatory Theatre, you may have spotted him in previous SLO REP productions or on other stages in the area. He sends his thanks to the whole SLO REP team and love to his family!

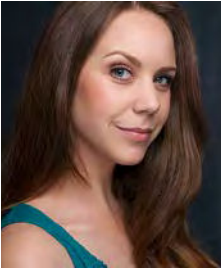


Steven Lasiter (Music Director, Vocals, Acoustic and Electric Guitar, Electric Bass, Mandolin) is overjoyed to be joining the SLO REP team and family! Hailing from Beaumont, Texas, he has been touring around the North American continent for the last 20 years performing for anyone who would care to watch and listen. Favorite roles are Johnny Cash in *Million Dollar Quartet*, Hank Williams, Sr. in *Lost Highway*, Buddy Holly in *The Buddy Holly Story*, and Dr. Frank N. Furter in *The Rocky Horror Show*. He's also so excited to share the stage again with his lovely wife, Jennifer! Enjoy the show, and let's rock and roll!

About the Cast

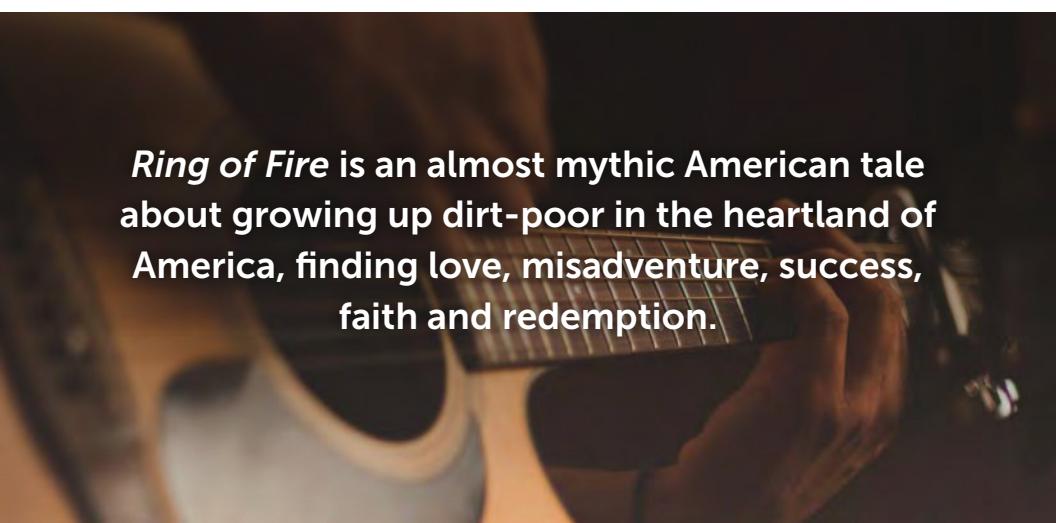


Matthew J. Staley (Vocals, Acoustic and Electric Guitar, Electric Bass, Cajon) is thrilled to be making his SLO REP debut. Matthew has been on national tour with *Once* (Eamon, Guy). *Cruise Ship: Blitz/Soul of the City* (Bahamas Paradise Cruise Line). *Regional: Guy in Once* (Red Mountain Theatre), Nikki/Norman in *Buddy: The Buddy Holly Story*, Joe in *The Spitfire Grill* (Oregon Cabaret Theatre), Carl/Elvis understudy in *Million Dollar Quartet* (Dutch Apple Dinner Theatre), *Timestep* (Broward Stage Door Theatre), Rev. Oglethorpe in *Smoke on the Mountain* (La Comedia Dinner Theatre), Anselmo in *Man of La Mancha* (The Princeton Festival). Matthew is originally from New Jersey and has a BFA from Rider University.



Rachel Tietz (Vocals, Acoustic Guitar, Electric Bass, Rhythm) is overjoyed to be back on the SLO REP stage! A central coast native, Rachel is a graduate of PCPA - Pacific Conservatory Theatre, with additional experience through Second City Chicago, The Academy of Theatrical Combat, and more. Previous SLO REP credits include Betty Jean in *The Marvelous Wonderettes*, Ruth Condomine in *Blithe Spirit*, Philia in *A Funny Thing Happened on the Way to the Forum*, and Ulla in *The Producers*. She has

also had the pleasure to direct and perform in many shows at The Great American Melodrama. She has a passion for working with young artists and proudly serves as the Assistant Education Director for the Academy of Creative Theatre at SLO REP.

A close-up, low-angle shot of a person's hands playing an acoustic guitar. The lighting is warm and dramatic, highlighting the wood of the guitar and the player's fingers. The background is dark and blurred.

***Ring of Fire* is an almost mythic American tale about growing up dirt-poor in the heartland of America, finding love, misadventure, success, faith and redemption.**

About the Authors

Richard Maltby, Jr. (Creator) includes among his Broadway credits: Conceived/directed *AIN'T MISBEHAVIN'* (1978 Tony, NY Drama Critics, Outer Critics and Drama Desk Awards. Also Tony Award for Best Director); *FOSSE* (1999 Tony, Outer Critics and Drama Desk Awards). Lyricist: *MISS SAIGON* (Evening Standard Award 1990, Tony Nomination for Best Score 1991). Director and co-lyricist of Andrew Lloyd Webber's *SONG & DANCE*, 1986 (Tony Award for star Bernadette Peters). With composer David Shire: director/lyricist *BABY*, 1983 (book by Sybille Pearson; seven Tony Award nominations); Lyricist: *BIG*, 1996 (book by John Weidman. Tony nomination: Best Score). Off-Broadway credits: director/lyricist *STARTING HERE, STARTING NOW*, 1977 (Grammy Award nomination); *CLOSER THAN EVER*, 1989 (Outer Critics Circle Awards: Best Musical, Best Score). Contributes devilish crossword puzzles to Harpers Magazine. Son of well-known orchestra leader; married to Janet Brenner; five children: Nicholas, David, Jordan, Emily and Charlotte.

William Meade (Creator) began his career as a musician. He has been a featured soloist with numerous orchestras, including the Zurich Philharmonic, Prague Philharmonic, and Jacksonville Symphony. He has produced concerts throughout the U.S. and Europe with artists ranging from Arlo Guthrie to BB King. Television: "The Miss America Pageant," "The Super Bowl Half Time Show," "Sex and The City," "Love Monkey," and "Sesame Street." On Broadway, he has been involved with more than 50 musicals. He is a Grammy-nominated record producer with a wide range of theatrical releases to his credit, from Hello, Dolly! With Carol Channing to *Elegies* by William Finn.



The poster features a wooden background with a blue banner at the top that reads "THE GREAT AMERICAN MELODRAMA EST. 1918" and "2023 SEASON!". Below the banner are six musical production cards arranged in a 2x3 grid. Each card includes the title, book and lyrics/music information, and the performance dates. At the bottom, there is a red banner with contact information.

| Production | Book and Lyrics | Music | Story | Dates |
|---|-------------------------------|-----------------------|--------------------------------------|--------------------------------|
| LUMBERJACKS in Love | Book and Lyrics by Fred Alley | Music by James Kaplan | Story by Fred Allen and James Kaplan | February 3rd - March 26th |
| Sherlock Holmes AND THE FINAL PROBLEM | | | | March 31st - May 21st |
| GOLD FEVER AT THE ROUGH AND READY | | | | July 21st - September 10th |
| under the BOARDWALK | | | | May 26th - July 16th |
| MUMMY Dearest | | | | September 15th - November 12th |
| Holiday Extravaganza | | | | November 17th - December 31st |

CONTACT US
805-489-2499
info@americanmelodrama.com
1863 Front St. Oceano, CA 93445

LIVE THEATRE - PROFESSIONAL ACTORS - COLD BEER - GREAT SNACKS

ACT 1 Song List

Country Boy
Straight A's In Love
In The Highways
While I've Got It
On My Mind
Five Feet High
and Rising
Daddy Sang Bass
The Old Rugged Cross
Cry, Cry, Cry
Big River
I Still Miss Someone
Get Rhythm

Dirty Old Egg
Sucking Dog
Angel Band
Flushed From the
Bathroom of Your
Heart
If I Were A Carpenter
Ring of Fire
Jackson

ACT 2 Song List

I've Been Everywhere
Sunday Mornin'
Comin' Down
All Over Again
Going to Memphis
Delia's Gone
Folsom Prison Blues
Man in Black
I Walk the Line
Waiting on the Far-
Side Banks of Jordan
Why Me, Lord?
Hey, Porter
A Boy Named Sue

Join us for caring for
our community **now!**



South County Womenade
donates items, time, and money
to meet the urgent needs of
community members in crisis

sslocw.org

Directors Notes

Growing up, my family never really listened to country music. My dad, however, was a music teacher and stressed the importance of appreciating all types of music. This prompted a family "country music tour" which inevitably led us to Nashville, Tennessee. It was there that I stood on the stage at The Grand Ole Opry and sang "You Are My Sunshine" to an empty theatre. In Memphis, we stopped by the infamous Sun Records and I imagined country music's legends walking through the doors for the first time.

Around that same time, Johnny Cash had hit a career lull. He was older and hadn't had a hit in years. To my naïve teenage self, he was "some old dude that used to be a country singer." Despite learning about Cash on our tour, I found it difficult to connect with him. I was more into jazz, pop, or musicals and didn't really care about a "washed up country music guy." That was my feeling about Johnny Cash.....until the early 2000's.

In 2002, convinced by his producer and with his health failing, Johnny recorded the Nine Inch Nail's song "Hurt." His touching version of the popular song reignited his career and allowed him to connect with a new generation of listeners. Trent Reznor, who originally wrote the song is quoted as saying "I used to think the song was mine, but now it's his."

Whether you're a fan of Johnny's songs that are from his gospel roots like "In the Sweet Bye & Bye," his crossover tunes like "Jackson," his comedic songs such as "Boy Named Sue" or his later covers like "Hurt," Cash has crafted a musical connection with everyone. It stands to reason that, musically, you can't get much more All-American than Johnny Cash.

From the naïve little girl who stood on the very stage that Johnny Cash once stood on, thank you for coming today. We all hope you enjoy this musical journey through Cash's life. At the very least, we are certain that you'll each find one song that resonates with you. That's the magic of Johnny Cash.

Director's Bio



Kelly Fidopiastis is a graduate of Binghamton University (BA Theatre). A NY native, she was the Director of Dance & Performing Arts for a large YMCA. Additionally, she both performed in and choreographed many productions for various theatres. During this time, Kelly's work earned her an Outstanding Performance Award from the Theatre Advisory of New York State. Since moving to CA, she has been fortunate to work with SLO REP, The Great American Melodrama, ACT and

The Civic Ballet of San Luis Obispo. Kelly has directed numerous shows for Ubu's Other Shoe Staged Readings. Most recently, her choreography was seen in SLO REP's *Xanadu* and *The Marvelous Wonderettes*. Thank you for supporting the arts!

About the Creative Team

Isabel Torres (Production Manager/Prop Design) is happy to be an ongoing part of SLO REP productions, including stage manager for *Xanadu!*, *Around the World in 80 Days*, and *A Christmas Story*. Isabel has worked in technical theatre for many years as a light and music operator, stagehand, and stage manager for shows like *Beauty & The Beast*, *The Mousetrap*, *Newsies*, *Mamma Mia*, *39 Steps*, and *Happiest Show On Earth*.

Kevin Harris (Lighting/Sound Design) received his MFA in Directing from the University of Iowa (2007), his BFA in Acting from New York University (1996), and his California Teaching Credential from Chapman University. While at NYU, he spent three years at the Atlantic Theatre Company studying acting under David Mamet, William H. Macy, and Felicity Huffman; he also spent a year at Musical Theatre Works (CAP 21) learning the finer intricacies of "jazz hands". Favorite roles at the Atlantic include *The Russian (Chess)*, *Alan Strang (Equus)*, *Jamie (The Last Five Years)*, *Orsino (12th Night)*, and *Rev. Hale (The Crucible)*. For several years, Kevin worked as a freelance director in L.O.R.T./Equity theatres across the nation. Favorite shows: *The Merry Wives of Windsor*, *The Comedy of Errors*, *The Exhibitionists*, *Militant Language*, *Woyzeck*, *Ghost Sonata*, *The Cherry Orchard*, *Man of la Mancha*, and several original plays which have gone on to be produced at the New York Theatre Workshop, The Public Theatre, The O'Neill, Cherry Lane, and many others. From 1999-2002 he was the Artistic Director of Centerpoint Theatre Group in San Luis Obispo, CA. In 2005, he traveled to the West Bank and Gaza Strip to co-write and direct an original play with Ashtar Theatre, Palestine's only professional theatre company. The subsequent play, *The Era of Whales*, has been performed in Gaza, Ramallah, Nablus, Jerusalem, and several international theatre festivals. Kevin has taught at the University of Iowa, University of Chicago, and has led dozens of workshops on *A Practical Handbook for the Actor* across the country. Kevin feels privileged to be part of bringing live theatre to San Luis Obispo.

Thank you to our "Toast of the Town" Wine Partner!

NINER
WINE ESTATES

ninerwine.com

2400 HIGHWAY 46 WEST | PASO ROBLES, CA

About the Creative Team

Barbara Harvey Abbott (Costume Designer) is excited to be joining the talented team at SLO REP this season. She's worked for theatres in California, Utah, and Indiana designing and building costumes for a wide range of shows from *Sister Act* to *School for Scandal*, and *Woyzek* to *Beau Jest*. Locally, Barbara designed for Opera SLO and Central Coast Gilbert & Sullivan and worked as a Cutter/Draper at PCPA. In addition to costuming, she enjoys raising her four young daughters and has a passion for fermenting foods and exploring the art of hand sewing and visible mending.

Dave Linfield (Scenic Design) designs nearly all of SLO REP's Mainstage productions. The theatre bug bit David in 1990 when an audition notice for a community theatre production caught his fancy. Over the years, he migrated from performing onstage to working behind the scenes, embracing technical stagecraft as his true calling. Dave's educational background in graphic design and his work experience in retail display and housing construction have blended together in distinctive ways to fuel his passion for designing and building sets.

PCPA
PACIFIC CONSERVATORY THEATRE

2022
2023 **SEASON 59**

THE RIVER BRIDE
by Marisela Treviño Orta
Feb. 16 - Mar. 5, 2023 | Severson Theatre

Emma
Adapted for the stage
by Joseph Hanreddy
From the novel
by Jane Austen

March 2 - 19
Marian Theatre
June 22 - July 2
Solvang Festival Theater

GET YOUR TICKETS TODAY!
PCPA.ORG | (805) 922-8313

The Show MUST Go On!

Unforgettable Characters. Extraordinary Stories.
Since 1947.

SLO REP is grateful to all of our generous donors. Each and every gift is important to us! This list recognizes donors who have pledged or contributed \$100 or more between July 1, 2022 and February 1, 2023.



Season 2022-2023 Donors

Diamond Circle (\$25,000+)

City of San Luis Obispo
The MOCA Foundation

Emerald Circle (\$10,000+)

Astound Business Solutions
Powered by Digital West
The Couch Family
Bette Kulp
Catherine & Richard Luckett
Susan Minker
Pam & Mitch Nichter
Ann Robinson
Bernhard Singens

Angels (\$5,000+)

Better Business
Financial Solutions
Janssen Youth & Youth
Sports Fund, Held at The
Community Foundation
San Luis Obispo County
Karen S. Kolba MD
Carol Kiessig
KSBY
Jeanne & Lawrence Lovelace
Larry & Jeanette Meek
New Times
RyLo Media Design,
Ryan C. Loyd
Subplot Studio

SLO REP is a 501(c)3 non-profit organization. Federal Tax ID#95-2556678. All donations are tax deductible, as allowed by law, and will be promptly and gratefully acknowledged.

Executive Producers (\$2,500+)

Libbie Agron
The Bostrom Family
Central Coast Funds
for Children
Jerry & Sharynn Chirpich
Diane Dekker Clausen
Kathy Coull
Keith & Wendy George
Gina Kirk
Brendan V. & Kathryn L.
McAdams
Shannon & Douglas Murphy
Carol MacCurdy &
Tom Nuckols
JAMBA, Linda Ozawa
Olds & Jeff Olds
Jay & Nicole Raftery
George & Jane Roach
Joan Gellert Sargen
Michael & Maryellen Simkins
Phyllis Momtazee Snelling
Deborah and Robert Stewart

Producers (\$1,000+)

American Riviera Bank
Gary Lawson & Tom Ammon
Karen Bailey
Seth & Chris Blackburn
Carol & Ray Boche
Coastal Peaks Coffee
Jayne & Steve Devencenzi
Daniel Freeman
Cindy Green & John Thomas

Cricket Handler &
Jerry Boots
Toni & Craig Kincaid
Marcia & John Lindvall Fund,
held at The Community
Foundation SLO County
Dianne N. Long
Promotional Concepts
MADwomen of SLO
Sharon Connors
Cindy Green
Linda Halisky
Mary Kay Harrington
Amy Hewes
Alicia Lara
Carol MacCurdy
Madelyn Millholland
Julie Moore
Colleen Rosenthal
Kathryn Rummell
Kathleen York
Barbara-Jo Osborne
Valerie Pallai
Terry Parry
Gigi & James Roark
Wilda Rosene
Marcia Scott
Cindy Green & John Thomas
Susan & Craig Updegrove
Marty Claus & Chip Visci
Ellie & Jermaine Washington
D. Rosh Wright Fund, a Fund
of The Community Foundation
San Luis Obispo County

Directors (\$500+)

Craig & Susan Armstrong
Sue & Rod Beckett
Clements Family
Foundation
Dori Duke
Cyndee Edwards &
Matthew Talarico
Judy Hemenway &
Jonathan Fellows
Christine & Richard Greek
Luanne & Fabrizio Griguoli
Victoria Grostick
William E. & Ingrid Kelly
Ashala & Brian Lawler
Mary-Ann Maloof
Sandra & Michael Morris
Brian Newman
Shannon & Douglas Murphy
John Ozanich
Michael & Christy Palmer
Judy & DK Philbin
Rotary Club of San Luis
Obispo de Tolosa
Priscilla & Hal Thilmony
Tom Weiss

Stars (\$250+)

Sandra Adams
Marcia Alter
Mary Baiamonte
Sharon & John Dobson
Elizabeth Dodder
Marilyn & Larry Gardner
Gail Gresham
Erik Justesen &
Ermina Karim
Claretta & Roger Longden
Sharon & Jerry Melson
The Minikel Family
Foundation
Jean & Matt Moelter
Randall Murray
Nancy & Donald Norton
Susan Piel
Nancy Piver
John Rolph
Bill & Carol Rust
Lynn Shaw

Alaine & Rich Steuk
Bob & Nanette Tarpinian
Denise Taylor & Neal
MacDougall
Frank Widmann & Terri Pilot

Stage Managers (\$100+)

Rebecca & Joseph
Anastasio
Karen Bailey
Darlene & Russ Bik
Julia Bockmon
Gerald Bollmann
Lois & Sonny Brown
Jay Campbell
Carlyn Christianson
Brian & Erin Clausen
Jody Hovland & Ron Clark
Grace Crittenden
Wendy Daly
Maureen A Dresp
Sandy & John Dunn
Audrey Elliott
Christopher & Andrea
Edgington
Landy Fike & John Forsberg
Elizabeth Frost
Sarah Garcia
Nancy Grant
Bevelina Hardwick
Gary & Muriel Harkins
Judith Ann Jennings
Donna & Randy Johnson
Erik Justesen &
Ermina Karim
Lisa Langere
Rosemarie & Adrian Leroy
Steve & Lori Lerian
Patricia Martinez
Paul & Robyn Metchik
Philip R Morris
Margaret O'Neill
Erin Ogren
Donna O'Shaughnessy
Naya & Kaz Pearson

Gregory & Zandra Peters
Roz Phillips
Yvonne Ramos &
Robert Smidt
Amy Reagle
Judith Resnick
Virginia Rodgers
Gail Ryff
Liz Stanley-Salazar
& John Salazar
Deb & John Spatafore
Lynn & Jon Sterner
Thomas & Linda Stuermer
Candace Splivalo
Meredith Takken
Patty & David Thayer
Kenneth & Nancy
Thompson
Debra Thompson
Elyse & Chris Ungar
Mary Blackler & Phil Wagner
Deborah & Jim Whitson
Janice Wolf
Ray Ramirez &
Gregory Zocher

Special Remembrances

**In Honor and Appreciation of
Jerry & Sharynn Chirpich**
by Kathy Coull

In Memory of Jules Hock
Catherine & Richard Luckett

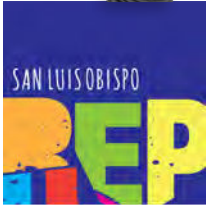
**In Honor of Erin Kinikin-
Polk's Birthday**
Catherine & Richard Luckett

In Honor of Burr Nissen
by Audrey Elliott

**In Honor of Alaine &
Richard Steuk**
by Judy Stark

**In Honor of Chip Visci's
tireless service to SLO REP**
Sandi Sigurdson &
Steve McGrath

All donations listed have been pledged or received as of
February 1, 2023 for the 2022-23 season.



Capital Campaign Donations

Many thanks to these incredibly generous supporters whose early gifts and pledges, and their belief in the future of SLO REP, have brought us two-thirds of the way to our goal!!

Luminaries

City of San Luis Obispo
Anonymous
Harold J. Miossi
Charitable Trust

Headliners

The Hughes Charitable
Foundation
Bette Kulp

STARS

Libbie Agran
The Bostrom Family
Gina Kirk
Catherine and
Richard Lockett
Brendan V. & Kathryn
L. McAdams
Susan Minker
Pam & Mitch Nichter
Jane & George Roach
Ann Robinson
Lois & Duke Williams
Memorial Fund, Held at The
Community Foundation
San Luis Obispo County

Leading Roles

Diane Dekker Clausen
Dr. Jill E. Anderson &
Steven B. Jobst, MD
Jim & Jeanette Efid
Dianne N. Long
The MOCA Foundation,
Mary Bianco
Linda Ozawa Olds
& Jeff Olds
Roy & Linda Rawlings
Michael & Maryellen Simkins
Marty Claus & Chip Visci
Ellie & Jermaine Washington

Supporting Roles

Sharynn & Jerry Chirpich
Kathy Coull
Matthew & Joy Cottle
Wendy & Keith George
Carol Kiessig
Karen S. Kolba, MD
Mike Lyons & Dick Morse
The Orndorff Family
Foundation
Janice Fong Wolf

Ensemble Cast

The Ron Burkhart Fund
In Memory of Deb
Burnstine Bremner,
by M. Anne Spence
In Memory of Dorothy
DeVries, by Robert DeVries
Mary & John Frey
Jean & Andrew
Greensfelder Fund,
Held at The Community
Foundation, San Luis
Obispo County
Deborah Adams &
Michael Howard
Jan & Steven Marx
Shelagh Garren &
Alan Pietsch
Pierre Rademaker Design
Doreen Wetzel & Ron Regier
Wilda Rosene
Joan Gellert Sargen
Marcia Scott
Alaine Steuk, by Judy Stark
(In Honor of Richard &
Alaine Steuk by Judy Stark)

For more information on our Capital Campaign and how you can help build the future of live theatre on the Central Coast, please contact Director of Development, Patty Thayer at (805) 781-3889, ext. 15 or email patty@slorep.org.

Leave a Legacy of Live Theatre for the Future

Everyone can leave a legacy. Great or small, planned gifts through your financial or estate plans will ensure that the enjoyment and enrichment you've experienced at SLO REP is available to our community for years to come.

Please join us in a round of applause for these members of SLO REP's **Legacy Society** whose foresight and generosity will keep live theatre going strong in downtown San Luis Obispo for years and years to come.

Legacy Society

Jeff McKeegan & Steven deLuque

Kate Hines & Bryce Engstrom

Ray* & Jaime Hatler*

Brenda & Jules Hock

Lisa Langere

Amy Hart & Stephen Lloyd-Moffett

Catherine & Richard Luckett

Jeanne & Lawrence Lovelace

Pam & Mitch Nichter

Gail Ryff

Michael & Maryellen Simkins

Robert Lahr & Bruce Stuart*

Brendan V. & Kathryn L. McAdams

William F. Mooney & Wilbur Wooster*

For more information about joining our Legacy Society, please contact Patty Thayer at **(805) 781-3889, ext. 15 or patty@slorep.org**.

*deceased

Thank you to all of these generous annual donors who made it possible for SLO REP to return to the stage this year. Thank you for making a difference. We wouldn't be here without you.

Supporting great live theatre doesn't have to be complicated!

Check out these four great ways to support SLO REP:

- 1 Join us as an Annual Fund Donor.** Your gift supports professional live theatre and creative educational programs right here in San Luis Obispo.
- 2 Give More and Owe Less!** If you're 70 ½ or older, a donation to SLO REP can count as your required minimum distribution from your IRA, plus save you money on taxes! (Please consult your tax advisor for details.)
- 3 Host a Visiting Artist in your Home.** It's a great way to get to know some very interesting artists, AND provide valuable support for the theatre. Please email kevin@slorep.org for details.
- 4 Donor-Advised Funds.** Designate a gift from your personal or family fund. You've already enjoyed the tax benefits of your gift, now you can enjoy sharing those funds in support of live theatre.




For more information about how you can join our family of supporters and support the future of live theatre in downtown San Luis Obispo, please contact Chris McBride at **(805) 781-3889, ext. 16 or email chris@slorep.org**.

Host Homes for Guest Artists

Got a spare room? Do you like meeting interesting people and supporting live theatre in downtown SLO? SLO REP utilizes a long-standing Host Home Program, which matches professional directors and actors with volunteer hosts for the duration of their time working at the theatre. Benefits of hosting a guest artist include complimentary tickets, acknowledgement in our playbill, invitations to special events and the chance to meet new friends and influence people!

For more information about hosting a SLO REP guest artist, please contact Kevin Harris at kevin@slorep.org.

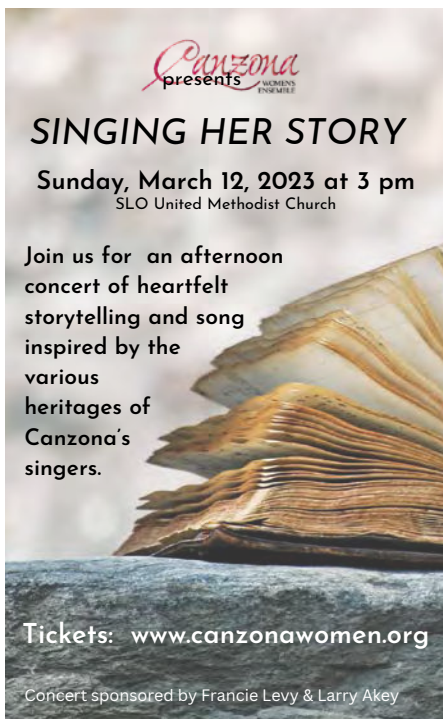


SINGING HER STORY
Sunday, March 12, 2023 at 3 pm
SLO United Methodist Church

Join us for an afternoon concert of heartfelt storytelling and song inspired by the various heritages of Canzona's singers.

Tickets: www.canzonawomen.org

Concert sponsored by Francie Levy & Larry Akey



WAKEUP WITH DAYBREAK

Weekdays 5-7am

KSBY 6 NEWS

Streaming Free 24/7

Roku Apple TV
firetv androidtv



CAL POLY
arts

2022/2023 Season



MICHELLE WOLF
OCT. 21



CARLA MORRISON
OCT. 28



ALAN CUMMING
NOV. 13



JANE LYNCH
DEC. 18

SEE THE **FULL PHENOMENAL LINEUP OF ARTISTS**
& PURCHASE YOUR SINGLE TICKETS STARTING AUG. 8
AT [CALPOLYARTS.ORG!](http://CALPOLYARTS.ORG)

BRYCE
ENGSTROM
ARCHITECT

(805) 235-3385

www.engstromarchitecture.com

Enjoy our signature dishes and drinks before and after the show!



I ♥ the showbiz



1117 Chorro St., SLO | 805.544.7433
www.BlackSheepSLO.com

**CLARK CENTER**
FOR THE PERFORMING ARTS

487 Fair Oaks Ave
Arroyo Grande, CA 93420



IT'S OUR 20th ANNIVERSARY & EVERYONE IS INVITED TO THE PARTY!

CLARK CENTER FOR THE PERFORMING ARTS
2022-2023 SEASON

TICKETS ON SALE AUG 1!
GET YOUR BROCHURE TODAY!
(805) 489-9444
www.clarkcenter.org



EDEN
ESTATE

Thanks to our Night on Fire Gala Wine Sponsors:

The Couch Family
Eden Estate Wines

Learn more and join their wine club at
edenestatewine.com



Contact

Box Office: (805) 786-2440
boxoffice@slorp.org
Business Office: (805) 781-3889

Box Office Hours

Wed-Fri 3 pm – 6 pm
Show Saturdays 3 pm – 5 pm
Will Call open 1 hour before every show

Downtown Venue Address

888 Morro Street
San Luis Obispo, CA 93401

Empleo Street Campus

3533 Empleo Street
San Luis Obispo, CA 93401

Mailing Address

PO Box 122
San Luis Obispo, CA 93406

Board of Directors

Pam Nichter, President
Ellie Washington, Vice-President
Debbie Stewart, Treasurer
Michael Simkins, Secretary & Past President

Members

Jay Beck
Jerry Chirpich
Diane Clausen
Keith George
Dianne N. Long
Richard Luckett

Susan Minker
Jeff Olds
Wilda Rosene
Marcia Scott
Chip Visci

Staff

Kevin Harris
Managing Artistic Director
Patty Thayer
Director of Development & Capital Campaign
Chris McBride
Director of Marketing & Annual Giving
Suzu Newman
Special Projects
Dave Linfield
Technical Director/
Scenic Designer
Allison Rajcevic
Volunteer Coordinator & Front of House
Carey Blauvelt
Box Office Staff

Kerry DiMaggio
Education Director
Rachel Tietz & Shannon Peters
Assistant Education Directors
Vincent Lemos
Education Coordinator
Penny DellaPelle Shannon Peters Amanda Thayer Lester Wilson
ACT Teaching Artists
Daniel Freeman Sonja Jackson Amanda Thayer Rylee Terry Melissa Walker-Scott
Assistant House Managers

Mission

SLO REP strengthens theatre’s cultural influence and enriches the Central Coast by producing professional theatre, nurturing artists and providing theatre education for children and adults.

Our Belief

Live theatre’s powerful storytelling connects people in ways that open the mind, nourish the soul and illuminate our shared humanity.

Vision

To be a nationally recognized regional theatre that:

- Produces professional theatrical productions in a state-of-the-art facility.
- Strengthens the cultural vitality of the Central Coast, entertains audiences, nurtures artists, and cultivates future generations of theatre enthusiasts.
- Creates a strong and sustainable economic impact, attracting residents and visitors to downtown San Luis Obispo.

Our Commitment

Theatre plays a vital role in our culture and our community and has a responsibility to enact positive change through its work, practices, educational programs and policies. We at SLO REP are committed to diversity, equity and inclusion in all aspects of our work. To learn more about our commitment to you, our community and to ourselves, visit our Diversity, Equity and Inclusion webpage at www.slorp.org/about/diversity-and-inclusion

Land Acknowledgement: San Luis Obispo Repertory Theatre acknowledges with respect that the place we work and gather is located on the traditional land of the Northern Chumash people.

SLO REP is a proud member of:



Artwork: Subplot Studio
Photos/Video: RyLo Media Design, Ryan Loyd

**UP
NEXT**

Chekhov's iconic characters and themes
are thrown into a blender and mixed
together with hilarious results.

MARCH 31 - APRIL 16, 2023



**BY
CHRISTOPHER DURANG**

The Bostrom Family

Show Sponsors

Susan Minker

Show Sponsor

Marcia Scott

Show Director Sponsor

Presented by special arrangement with Dramatists Play Service, Inc., New York