



**MAY 1**  
THROUGH  
**MAY 17**



# THE ~~LIFESPAN~~ OF A *FACT*

BY JEREMY KAREKEN & DAVID MURRELL  
AND GORDON FARRELL

BASED ON THE BOOK BY JOHN D'AGATA AND JIM FINGAL

**Marty Claus &  
Chip Visci**

Show Sponsors

**Kelly Pope &  
David Bulfer**

Show Sponsors

**Bette Kulp**

Show Director Sponsor

THE LIFESPAN OF A FACT is presented by arrangement with Concord Theatricals on behalf of Dramatists Play Service collection. ([www.concordtheatricals.com](http://www.concordtheatricals.com))

# Thank you to our Season 79 Sponsors

Vanguard Sponsor



Season Sponsors



SUBPLOT STUDIO



Better Business Financial

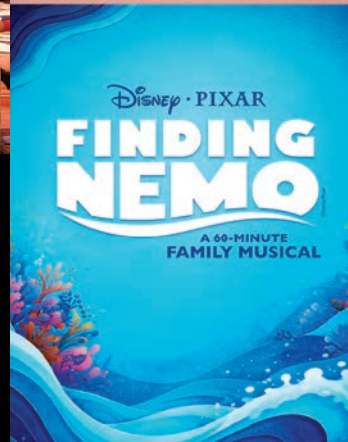
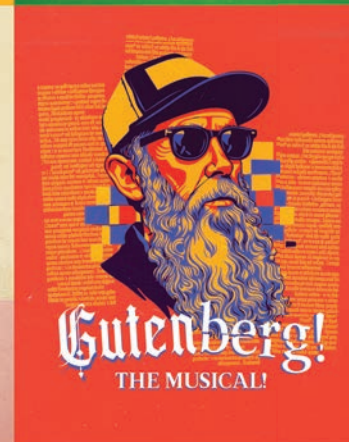


*Who's Afraid of Virginia Woolf? | Photos by RyLo Media Design, Ryan C. Loyd*

Playbill Sponsors

- Bette Kulp
- Catherine & Richard Lockett
- Pam & Mitch Nichter
- Ann Robinson
- Marty Claus & Chip Visci

# ANNOUNCING OUR 80TH SEASON!



# COMING SOON!



"A kiss may not be the truth, but it is what we wish were true."  
LA Story

barbara-jo osborne  
A R T I S T

FINE ART 805-215-4115 c

## A Note from the Managing Artistic Director

Thanks for being here and joining us for *The Lifespan of a Fact*.

When we're building a season, we're always on the hunt for plays that stick with you a little; ones that spark conversation on the drive home, or at least make you argue with the person you came with. This one hooked me right away. It's fast, funny, and just a little dangerous in the best way.

At the center of it all is a deceptively simple question: what do we actually mean when we say something is "true"? Is it about getting every detail exactly right? Is it about capturing a bigger emotional truth? And how much wiggle room do we allow before things start to feel... questionable?

The play doesn't settle the debate for us. Instead, it drops us right in the middle of it and lets three very opinionated people go at each other. The result is smart, tense, and, thankfully, very funny. You may find yourself picking sides. You may change your mind halfway through. You may double down and defend your position all the way to the parking lot. All are welcome outcomes.

This kind of work takes a village. Huge thanks to our artists, staff, and volunteers for bringing so much precision, energy, and humor to the stage. And to our donors and supporters, thank you for making sure we can keep producing plays that ask big questions and trust audiences to wrestle with them.

And finally, to you. Thanks for showing up. In a world where it's very easy to stay home and scroll, it means a lot that you chose to be here, sharing this experience in real time with a room full of other humans.

Enjoy the show... and the debate that comes after.



Kevin Harris



**Kevin Harris** grew up on the Central Coast performing with many local theatre groups, including the San Luis Obispo Little Theatre. He went on to study at the Tisch School at NYU and at the Atlantic Theatre Company. He was the Artistic Director of San Luis Obispo's first professional theatre, Centerpoint Theatre Group and the Theatre Manager of the Contemporary Art Center in New Orleans. He received his Master of Fine Arts in Directing from the University of Iowa and worked throughout the country and in the Middle East directing and as a collaborator on original plays. He has taught at the University of Iowa, University of Chicago, and has led dozens of workshops on *A Practical Handbook for the Actor* across the country. Kevin feels privileged to be part of bringing live theatre to San Luis Obispo.

## Show Sponsors

**Marty Claus & Chip Visci** worked as journalists in Detroit, Miami and San Jose before moving to the Central Coast, where Chip was publisher of the Tribune from 2005 to 2008.

Both spent most of their journalism careers as editors at the Detroit Free Press. For them, *The Lifespan of a Fact* is a vivid reminder of endless hours working with reporters striving to present the facts in the most compelling way.

Now retired, Chip and Marty are enthusiastic SLO REP supporters as season subscribers, donors and volunteers. Chip has served on the Board of Directors since 2017, and on the Capital Campaign Steering Campaign since its inception in 2019.

They hope you enjoy this show – and many more!



## Show Sponsors

**Kelly Pope & David Bulfer** spent their careers in the heart of Silicon Valley – David building supercomputers and cloud technology, while Kelly designed video games and interactive educational software. In 2019, they traded the fast pace of hi-tech for the beauty and tranquility of Templeton. They haven't looked back!

Long-time arts supporters of TheatreWorks in Mountain View, their true passion has always been ensuring students have access to the arts. They believe that experiencing live performance at a young age creates a lifelong impact.

David and Kelly discovered SLO REP in 2022 and quickly fell in love with the Academy of Creative Theatre – the education and training program offering year-round classes, camps, and performance opportunities for young artists. Now, they're on a mission to broaden the Academy's reach, ensuring that underserved students across San Luis Obispo County have the same opportunity to experience the transformative power of the arts.

Beyond SLO REP, Kelly serves on the board of Must! Charities and mentors high school students through Opening Doors for Youth in Paso Robles. Together, they support the Libretto Conservatory and other organizations helping San Luis Obispo County thrive. When they're not championing good causes, you'll find them traveling, cycling, cooking, and enjoying good food and wine – and, of course, keeping up with their two dogs.



You are invited to join a special group of  
100 supporters to be celebrated as

## PILLARS OF THE THEATRE

With your gift of \$5,000, your name will be honored for decades to come in a dedicated lobby display at our new venue. Together, we can uphold both the art and the place where it thrives.

Find out more at [slorep.org/a-new-stage](https://slorep.org/a-new-stage)

**Your Local News, Arts, & Entertainment Source on the Central Coast**

(805) 546-8208 • newtimeslo.com

**NPR. Local News. Great Music.**

**kcbx**  
Central Coast Public Radio

Lompoc.....95.1FM

## About The Director

**Suzu Newman (Director)** first directed for SLO REP in 2011 and is grateful for the experience and treasured relationships she has acquired while working in theatre on the central coast. For SLO REP: *You're a Good Man, Charlie Brown*, *Lost in Yonkers*, *The Drowsy Chaperone*, *9 to 5 – The Musical*, *The Marvellous Wonderettes*, *Every Brilliant Thing*, *The Santaland Diaries*, *Musical of Musicals: The Musical*, *Vanya and Sonia and Masha and Spike*, *Greater Tuna*, *A Funny Thing Happened on the Way to the Forum*, *Picasso* at the *Lapin Agile*.



## Director's Notes

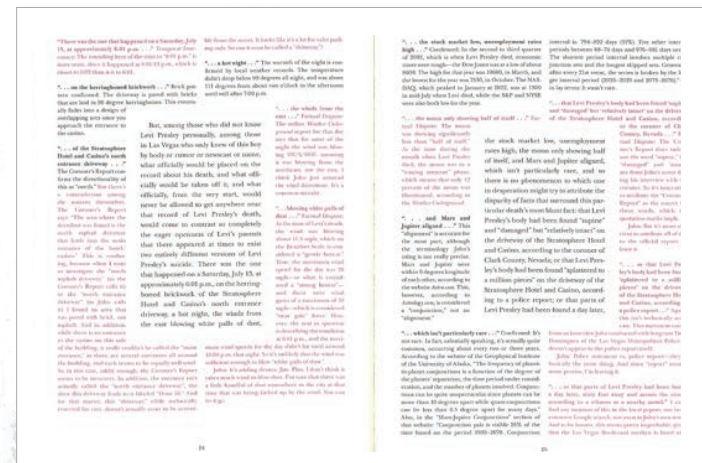
The lobby display for SLO REP's last production, *Who's Afraid of Virginia Woolf?* posed a true-or-false question for audiences to weigh in on:

**A good story can seem truer than the facts.**

The response from participants was overwhelmingly "true". But...

- Can facts also be poetic?
- Can art also equal reality?
- Is truth multidimensional?
- If you believe something with certainty, does it make it a fact?
- And most importantly, how much does it matter?

After spending months with this play and the source material on which it was based (sample pictured below) I think **feel like** I have the answer **come to a conclusion!**



## About the Authors

**Jeremy Kareken** is a playwright living in New York and Baltimore. His short plays *Hot Rod*, *Big Train*, and *80 Cards* have been performed around the country and internationally. He served as a speech writer and policy analyst for two presidential campaigns. His awards include the Sewanee Conference's Dakin Fellowship for *Farblondjet*, and the Guthrie/Playwrights Center's Two-Headed Challenge for *The Sweet, Sweet Motherhood*. The Hamptons Film Festival Screenwriters Conference selected Kareken and David Murrell for their horror-comedy script about haunted breast implants: *THESE! Conquered the Earth!* In 2018, PlayPenn shortlisted Jeremy's new political satire about an illiterate king, *The Red Wool*. Born and raised in Rochester, New York, and a graduate of the University of Chicago, he has taught at NYU, NYIT, the Actors Studio Drama School, and currently teaches at the Acting Studio, New York. A lifetime member of The Actors Studio, Jeremy occasionally acts and for 18 years served as the researcher for Bravo TV's *"Inside the Actors Studio."*



**David Murrell** was born and raised in New York City. He graduated from Stuyvesant High School and the University of Chicago, currently lives in Queens, and has written a sea chest's worth of TV and film treatments and spec scripts. Access Theater (NYC) and the Cleveland Public Theatre each produced his play *Ductwork* and the Hamptons Film Festival Screenwriters Conference selected his and Jeremy Kareken's feature screenplay about haunted breast implants, *THESE! Conquered the Earth*. In 2019, the Outer Critics Circle co-awarded David its John Gassner Playwriting Award for *The Lifespan of a Fact*.



## About the Authors

**Gordon Farrell** trained as a playwright at the Yale School of Drama, receiving an MFA in 1986 and went on to work with major Hollywood studios, initially as a story analyst for Warner Brothers and Columbia Pictures, and eventually as a screenwriter. He has written for hire and sold screenplays to Universal Pictures, Warner Brothers, MGM, and ITC. Farrell's first independent screenplay, *Girls Who Smoke*, premiered in 2011. It went on to be an official selection at more than a dozen film festivals, receiving the Audience Choice Award at Seattle's Post Alley Film Festival. As a playwright, from 2009 to 2013, Gordon worked with dozens of women on New York's Lower East Side who wanted to tell their personal stories on stage. The series of monologue plays that grew out of it was called *In the Red Room/Every Woman Dances for Someone*. His other plays have been produced in San Francisco, and at Alleyway Theatre, the Yale School of Drama, and New York's Primary Stages. He is the author of *The Power of the Playwright's Vision*, published by Heinemann Press in 2001. It has been translated internationally and become a standard playwriting text at colleges and universities in North America, Europe, and Asia.



**SLO Review**  
Your SLO County Connection  
to Arts & Culture  
*SLOReview.org*  
NEWS | REVIEWS | COMMENTARY | ORIGINAL CREATIVE WORK



**BRYCE  
ENGSTROM  
ARCHITECT**  
(805) 235-3385  
[www.engstromarchitecture.com](http://www.engstromarchitecture.com)

Specializing in single and multi-family residential projects, light commercial buildings, restaurants, and other tenant improvement projects.



# THE LIFESPAN OF A *FACT*

BY JEREMY KAREKEN & DAVID MURRELL  
AND GORDON FARRELL

BASED ON THE BOOK BY JOHN D'AGATA AND JIM FINGAL

THE LIFESPAN OF A FACT was originally produced on Broadway by Jeffrey Richards, Norman & Deanna Twain, Will Trice, Barbara H. Freitag, Suzanne Grant, Gold/Ross Productions, Jamie deRoy, Jennifer Manocherian, Barbara Manocherian, ManGol Productions, Carl Moellenberg/Wendy Federman, Ken Greiner, Van Kaplan, Dominick LaRuffa Jr., Marc David Levine, WitzEnd Productions, Eric Falkenstein/Moreland Mott, Caiola Productions, Rimmel T. Dickinson, & Jayne Baron Sherman

THE LIFESPAN OF A FACT is presented by arrangement with Concord Theatricals on behalf of Dramatists Play Service collection. ([www.concordtheatricals.com](http://www.concordtheatricals.com))

## Cast of Characters

Jim Fingal ..... Kelly Brown  
John D'Agata ..... Ben Abbott  
Emily Penrose ..... Melinda Parrett\*

\*Ms. Parrett is a member of Actors' Equity Association, the Union of Professional Actors and Stage Managers in the United States, appearing under a single engagement contract.

## Setting

The action takes place in the office of publisher Emily Penrose, Manhattan, New York and at the home of John D'Agata in Las Vegas, Nevada. The time is present day.

***The Lifespan of a Fact runs approximately 85 minutes  
with no intermission.***

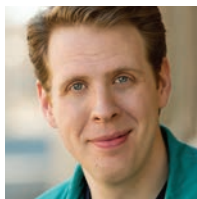
## Production Team

Director ..... Suzy Neman  
Stage Manager ..... Bekah Badger  
Fight Director ..... Peter Hadres  
Scenic Design ..... Dave Linfield  
Costume Design ..... Barbara Harvey Abbott  
Lighting & Sound Design ..... Kevin Harris  
Projection Designers ..... Ryan Flores & Nick Merzon  
Set Dressing & Props ..... Dave Linfield, Suzy Newman  
Set Construction & Painting Crew ..... Dave Linfield, Bob Rice, Greg Peters,  
Valerie Pallai, Larry Bolef, Lisa Langere,  
Ethan Shea, Kata Linfield, Oliver Maxwell

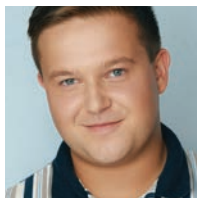
Any photography, video or audio recording of this production is strictly prohibited.  
Please silence your cell phones.

## About the Cast

**Ben Abbott (John D'Agata)** is an actor and playwright. He attended the Acting Conservatory at PCPA – Pacific Conservatory Theatre in Santa Maria and earned a BA in Theatre and Performance Studies from U.C. Berkeley. He is an MFA candidate in playwriting from Hollins University. At SLO REP, Ben has appeared as Andrew in *I Hate Hamlet*, Oliver Warbucks in *Annie*, and Ralph in *A Christmas Story* for the last four years. As a playwright, his produced plays include: *Grave Mistakes*, *Shut Up Sherlock*, *The Piratess* and *Buddies: A Bromantic Comedy*.



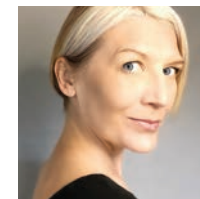
**Kelly Brown (Jim Fingal)** is very excited to be making his SLO REP debut! You may recognize him from several shows over the past two years at The Great American Melodrama. Other notable roles are Prince Dauntless in *Once Upon a Mattress*, Patsy in *Spamalot*, and Nick Massi in *Jersey Boys*. Kelly is originally from Rolla, MO, and received a BFA in Musical Theatre from Western Illinois University. Kelly would like to thank his family and friends for their never-ending support! Socials: [kellylbrown.com](http://kellylbrown.com); IG: @k311y\_8r0wn



Represented by Stewart Talent

## About the Cast


**Melinda Parrett\* (Emily Penrose)** gratefully returns to SLO REP and the Central Coast, having last appeared in *Deathtrap* in 2019. She recently made her NYC debut in *Annie* at Madison Square Garden (starring Whoopi Goldberg), and the subsequent Broadway National Tour. Since graduating from PCPA – Pacific Conservatory Theatre in 2000, she has performed with theatres all over the country, including Milwaukee Rep, Denver Center, Geva Theatre, Goodspeed Opera House, Santa Cruz Shakespeare, Sacramento Music Circus, Sierra Rep, B Street Theatre, Oregon Cabaret, and Utah Shakespeare Festival, where she has spent 11 seasons. Later this year, she'll be seen in Lake Tahoe Shakespeare's production of *Macbeth*. Thank you for supporting live theatre and the arts! IG: @melinder



\*Ms. Parrett is a member of Actors' Equity Association, the Union of Professional Actors and Stage Managers in the United States, appearing under a single engagement contract.

**Voted BEST BAR and BEST MAC 'N CHEESE in SLO County!**

Enjoy our signature dishes and drinks before and after the show!

 @blacksheepslo 

1117 Chorro Street • Downtown SLO  
(805) 544-7433 • [BlackSheepSLO.com](http://BlackSheepSLO.com)

FIBER • INTERNET • HOSTED VOICE

**Astound**  
Business Solutions  
Powered by DIGITAL WEST

LET'S CONNECT:  
Jeff Buckingham  
[Jeff.Buckingham@astound.com](mailto:Jeff.Buckingham@astound.com)  
805.545.5100

[www.digitalwest.com](http://www.digitalwest.com)

## About the Production Team

**Bekah Badger (Stage Manager)** is thrilled to be a part of yet another production at SLO REP! She's so glad to be working with this small, yet incredibly talented group, as well as the amazing production team. Bekah has been working with SLO REP for nearly two years now, filling various crew and stage management positions. When she's not at the theatre, Bekah fills her time with hiking, social dancing, and studying psychology and theatre in college. Bekah would like to thank you (yes, YOU!) for supporting the arts, and she hopes you enjoy the show!

**Peter Hadres (Fight Director)** made his onstage debut at SLO REP earlier this season as the quietly heroic Mayor Meekley in *Unnecessary Farce*, however he has been an integral part of several productions as a Fight Director. Peter's SLO REP credits include *I Hate Hamlet*, *Deathtrap* and *Who's Afraid of Virginia Woolf?*. For 20 years, Peter was a resident artist at PCPA—Pacific Conservatory Theatre, where he taught hundreds of students and appeared in over 85 productions, including *My Fair Lady*, *Trying*, and *You Can't Take It With You*. He has performed in over 40 productions of Shakespeare at festivals around the country, including Washington, Colorado, Idaho, Baltimore, Wisconsin, and New Jersey, as well as the Santa Cruz Shakespeare Festival and Cal Shakes. Peter received a BA from San Jose State and an MFA from the University of Delaware PTP.

**Barbara Harvey Abbott (Costume Designer)** is excited to be returning to SLO REP this season! She received her MFA in Costume Design and Technology from Indiana University. Locally, Barbara designs costumes here at SLO REP and at the Great American Melodrama. She teaches costume construction at Cuesta College and artistic sewing at Estero Bay Art & Craft. In addition to costuming, she enjoys raising her four young daughters with her husband, Ben Abbott, and has a passion for fermenting foods, natural dyes, and the art of hand sewing and visible mending.

**Dave Linfield (Scenic Design)** has designed and built nearly all SLO REP's Mainstage productions over the past 15 years. The theatre bug bit him in 1990 when an audition notice for a community theatre production caught his fancy. Over the years, he migrated from performing onstage to working behind the scenes, embracing technical stagecraft as his true calling. Dave's educational background in graphic design and his work experience in retail display and housing construction have blended in distinctive ways to fuel his passion for designing and building sets.

**Ryan Flores (Projection Designer)** is a passionate performing arts professional with extensive experience in technical theatre and demonstrated success in arts leadership. He serves as Managing Director of the Templeton Performing Arts Center, where he has helped guide the venue into its next chapter as a hub for the arts in North San Luis Obispo County. He is also honored to be instructional faculty and resident lighting designer for the Theatre Department at Cuesta College. He is passionate about building strong arts programs and supporting the next generation of artists. Ryan is excited to work with SLO REP for the first time!

**Nick Merzon (Projection Designer)** is excited to be working with SLO REP for the first time on *The Lifespan of a Fact*. He serves as Lead Technician at the Templeton Performing Arts Center, where he works closely with clients to bring the technical side of their shows to life. In addition, he collaborates with several local organizations as a lighting designer and projection engineer. He's grateful to be part of such a fun, hardworking team on this production.



**Visit our shop!**

3566 South Higuera #100  
San Luis Obispo, CA 93401

Monday – Friday: 7-4, Saturday: 7-1, Closed Sunday

[coastalpeakscoffee.com](http://coastalpeakscoffee.com)

# Season 2025-2026 Donors

SLO REP is grateful to ALL our generous Annual Fund donors who help keep live theatre going strong all year long. This list recognizes donations of \$100 or more for our 79th Season through April 3, 2026

Every effort has been made to ensure the accuracy of this list. If you have any questions about your listing, please contact Patty Thayer at [patty@slorep.org](mailto:patty@slorep.org).



## Diamond Circle (\$25,000+)

Bert and Candace Forbes\*  
Ann Robinson\*  
The City of San Luis Obispo  
The Community Foundation  
San Luis Obispo County\*

## Emerald Circle (\$10,000+)

Astound Business Solutions  
Marty Claus & Chip Visci  
Bette Kulp  
Catherine & Richard Luckett\*  
Pam & Mitch Nichter  
Debbie & Robert Stewart

## Angels (\$5,000+)

Anonymous  
Better Business  
Financial Services  
Kelly Pope & David Bulfer  
Sharynn & Jerry Chirpich  
Diane Dekker Clausen  
Jayne & Steven Devenconzi  
Wendy & Keith George  
Hotel SLO  
Brenda Hock  
JAMBA, Linda Ozawa  
Olds & Jeff Olds  
Carol Kiessig\*  
Gina Kirk  
Karen S. Kolba MD  
KSBY  
Jeanne & Larry Lovelace  
Harold J. Miossi  
Charitable Trust\*  
Annie Mohler &  
William Moseley  
New Times  
Carol MacCurdy &  
Tom Nuckols  
Pacific Gas and Electric  
Company\*  
Jane & George Roach  
RyLo Media Design,  
Ryan C. Loyd\*  
Michael & Maryellen Simkins

Subplot Studio  
Kathleen & Jonathan York\*

## Executive Producers (\$2,500+)

American Riviera Bank\*  
Jill Anderson & Steve Jobst  
Anonymous  
Carol & Ray Boche  
Shasta & Thomas Brander  
Deluxe Corporation  
Sharon & John Dobson\*  
Promotional Concepts,  
Jamie & Kevin Magon  
Susan Minker\*  
Barbara-Jo Osborne\*  
Esmeralda & Clint Parker  
Roz & John Phillips  
Joan G. Sargen  
Margo & Russ Zink

## Producers (\$1,000+)

Marcia Alter  
Craig & Susan Armstrong  
Cricket Handler &  
Jerry Boots  
Diane Borad-Mirken  
Carol Burkhart  
Debbie & Casan Callaway  
Sorina Carabeth  
Maria Ciamaichelo  
Anika & John Clements  
Nick Cassun & Miguel Ortiz  
Central Coast  
Women's League\*  
Coastal Peaks Coffee  
Donna & Larry Coffey  
Mary Reese & Robert DeVries  
Julie & Richard Dorman  
Sarah Garcia  
William E. & Ingrid Kelly  
Bernie & Ed Kurtz  
Betty & Tim Loveless  
Rodger & Kathy Mastako  
June Minikel

Nurse Mo  
John Ozanich  
Brian & Michelle Newman  
Valerie Pallai  
April Paletsas  
Nicole & Jay Raftery  
Sarah Sabatino  
Sharon Harris &  
Dennis Schneider\*  
Stacy Sullivan  
Priscilla & Hal Thilmony  
Cindy Green & John Thomas  
Beverly Tracy  
Ellie Washington REALTOR®  
& Jermaine Washington\*  
Tom Cash & Danna Weidner  
Tom Weiss\*

## Directors (\$500+)

Patricia & Robert Anderson  
Gloria Authier  
Odile Ayrat  
Gloria Authier  
Angela Brokaw  
Stephen & Deronda Burdette  
Marianne Davis\*  
Donald E. & Marguerite  
Erickson  
Judith Hemenway &  
Jonathan Fellows  
Landy Fike & John Forsberg  
Daniel Freeman  
Rob & Andrea Jones  
Sharon & Jerry Melson  
Susan Piel  
Noreen Martin-Hulburd  
Philip R. Morris  
Lydia Mourenza  
Kimberly Perez  
Roz & John Philips  
Emma & Mike Reeve  
Gigi & James Roark  
John & Elizabeth  
Stanley-Salazar  
Ann L. Spencer

Linda Seifert & Jeff Stein  
Meredith Takken  
Elyse & Chris Ungar  
Jeremy & Natalie  
Vander Kam\*  
Dana & Charles Wright  
Janice Fong Wolf

## Stars (\$250+)

Sandra Adams  
Anonymous  
Marie Allen  
Chuck Bandelian  
Joan Borger  
Claudia Collier  
Maureen Dresp  
LeeAnne Fisher  
Carol & Robert Grosse  
George & Pam Havale  
Lorraine Kraker  
Robert Bergman &  
Marilyn McAvoy  
Kevin Casey & Mike Mesker  
Sandra Morris  
Shannon & Douglas Murphy  
Bill Donovan & Charles Myers  
William Newman  
Don & Nancy Norton  
Provost & Pritchard,  
Ronald Samuelian  
Heidi & Morris Sealy  
Lynn Shaw  
Craig Steele\*  
Cindy Green & John Thomas  
The Welch Family

## Stage Managers (\$100+)

Gary Lawson & Tom Ammon  
Kathy & Jim apRoberts

Jim & Rebecca Armstrong  
Michelle & Timothy Auran  
Mitch Blum & Don Lively  
Julia & Chris Bockmon  
Boeing Corporation  
Linda Butler  
Charlene Chaloner  
Mary Ciernia  
Connie & John Cutler  
Cathy Dalbey  
Elena & Joseph DeMartini  
Sharon Deos  
Andrea & Chris Edgington  
Carole & Jose Luis Flores  
Julie & Richard Frankel  
Elizabeth Frost  
Louise Frye  
Sandra & Val Gillespie  
Joel Gross  
Nancy Hackmeyer  
Emily Hamilton  
Wayne Hansen  
Jack Harris  
George & Pam Havale  
Bill & Yvonne Hoffman  
Debra Jackson  
Cynthia & David Javitz  
Judith Ann Jennings  
Jean Kidder & Warren Jensen  
Rob & Andrea Jones  
Brice & Betsy Keith  
Michael Krasik  
Elizabeth Koch-Murray  
Christian Carlberg &  
Jessica Lehrbaum  
The Lenz Family\*  
George & Marie Lepper  
Adrian & Rosemarie LeRoy

Trudy & Craig Lindaman  
Claire Lockwood  
Greg & Jeannie MacDougall  
Glee Masumoto  
Jean & Matt Moelter  
Judy Obermeier  
Karen O'Grady  
Paypal Giving Fund  
Greg & Zandi Peters  
Judy & D.K. Philbin  
Janine & Stephen Quagliano  
Karen Ranfome  
Judith Resnick  
Jeanne Robbins  
Dana & Scott Robertson  
Alice Robinson  
Paul & Barbara Rose  
Gail Ryff  
Isaac & Sandra Shafran  
Ilona & Behrooz Shakibnia  
Heather Smith  
Candace Splivalo  
Diane Steinberg-Lewis\*  
Lynn & John Sterner  
Bill & Linda Thoma  
Kenneth & Nancy Thompson  
Denise & Dan Turner  
Bobby West-Thompson  
David Whitcher  
Terri Pilot & Frank Widmann  
Rick & Barb Williams  
Stephen Wolfe\*  
Kathleen & Dale Wolff  
Craig Steele & Sue Wright\*  
Dana & Charles Wright  
Linda & Raymond Zeuschner  
The McCarthy-Zirion Family\*  
Ray Ramirez & Greg Zocher

## Special Remembrances

**In Memory of Scott Authier**  
Gloria Authier

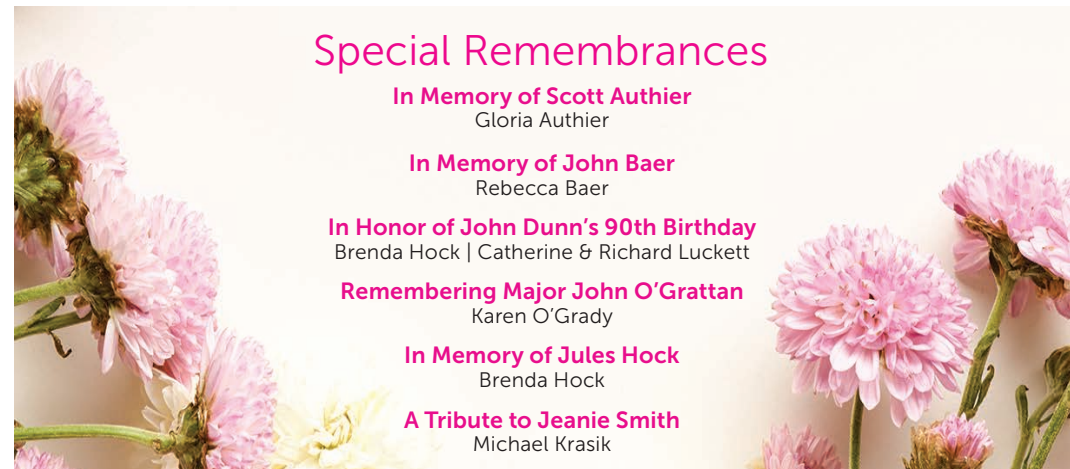
**In Memory of John Baer**  
Rebecca Baer

**In Honor of John Dunn's 90th Birthday**  
Brenda Hock | Catherine & Richard Luckett

**Remembering Major John O'Grattan**  
Karen O'Grady

**In Memory of Jules Hock**  
Brenda Hock

**A Tribute to Jeanie Smith**  
Michael Krasik



# A New Stage

## The Campaign for San Luis Obispo Repertory Theatre

Thank you to all our generous Capital Campaign donors. This list recognizes donations of \$1,000 or more through April 3, 2026.



### VANGUARD DONOR

City of San Luis Obispo

### MILLION DOLLAR QUARTET

Catherine & Richard Luckett  
Bette Kulp  
Harold J. Miossi Charitable Trust  
Murray Living Trust  
Glenn Murray, Randall & Lynn Murray

### BUILDERS

The Hind Foundation  
The Hughes Charitable Foundation  
Susan Minker  
Ann & Lou Robinson

### VISIONARIES

Libbie Agran  
The Bostrom Family  
Sharynn & Jerry Chirpich  
Marty Claus & Chip Visci  
Diane Dekker Clausen  
The Community Foundation  
San Luis Obispo County  
Jill Anderson & Steven Jobst  
Gina Kirk  
Patricia Kohlen  
The John & Marcia Lindvall Fund  
Kathryn L. & Brendan V. McAdams  
Jeanette & Larry Meek  
Pam & Mitch Nichter  
Jane & George Roach  
The Ken & Martha Schwartz Fund  
John Swift  
The Lois & Duke Williams Fund

### HEADLINERS

Concettina & Allyn Arnold  
Efrid Family Fund,  
Jim & Jeanette Efrid  
Kate Hines & Bryce Engstrom  
The Estate of Dr.  
Gregory A. Koob  
Ann & David Lawrence  
Dianne N. Long  
Joan G. Sargen  
Andy Maness & Steve Schmidt  
Michael & Maryellen Simkins  
Deborah & Robert Stewart

Kathleen & Nick Tompkins  
Bob & Debbie Wacker  
Ellie Washington, REALTOR®  
& Jermaine Washington  
Tim Williams  
Kathleen & Jonathan York

### STARS

Susan & Craig Armstrong  
Karen Bailey  
Kelly Pope & David Bulfer  
Anika & John Clements  
Kathy Coull  
Anonymous  
Jennifer Martin & Don Gaede  
Jacqui Ghosin  
Geri LaChance  
Jeanne & Larry Lovelace  
Daniel Levi  
Kevin & Jamie Magon  
The MOCA Foundation,  
Mary Bianco  
Merri & George Nagano  
Carol MacCurdy & Tom Nuckols  
Linda Ozawa Olds & Jeff Olds  
Esmeralda & Clint Parker  
Barbara & Carl Peck  
Roy & Linda Rawlings  
Deb & John Spatafore  
Ke-Ping & Su Tsao  
Nancy & Jerry Weber

### LEADING ROLES

Linda Ashworth  
Astound Business Solutions  
Molly & Edward Attala  
Rebecca & John Baer  
Joan Borger & Carl Baker-Madsen  
The Beck Family  
Joann & Stan Benson  
Carol & Ray Boche  
Cricket Handler & Jerry Boots  
Diane Blakeslee Brocato  
& Joseph E. Brocato  
Henry W. Bull Foundation  
The Caldwell Family  
Vincent Dominic Carlone Trust  
Miguel Ortiz & Nick Cassun  
Rosaly Castillo  
Dave Christy

Joan Collier  
Dave & Maggie Cox  
Grace Crittenden  
Connie & John Cutler  
Mary Reese & Robert DeVries  
Sharon & John Dobson  
Julie & Richard Dorman  
Susan & Budd Dressler  
Carl & Robin Dudley  
Sandy & John Dunn  
Elizabeth Frost  
Bob Garrett  
Wendy & Keith George  
Nancy Grant  
Jeanie & Andy Greensfelder  
Heather Westing & Kyle Gunsch  
Bevelina & Thomas Hardwick  
Pam & George Havale  
Patti & Jerry Hempenius  
Brenda & Jamie Hock  
Dave & Sharon Juhnke  
Ermina Karim & Erik Justesen  
Gail Kammermeyer  
David & Deborah Kastner  
Carol Kiessig  
Margaret King  
The Kinkade Family,  
Michele Kinkade  
Karen S. Kolba M.D.  
Bernie & Ed Kurtz  
Donna & Kevin Lewis  
Kelli & Abe Lincoln  
Claretta & Roger Longden,  
The Longden Family  
Neal MacDougall & Denise Taylor  
Linda Collier Mahnken  
Jan & Steven Marx  
Sandi Sigurdson & Steve McGrath  
Kevin Casey & Mike Mesker  
Carl & Lulu Mitchell  
Family Foundation  
Mike Lyons & Dick Morse  
Priscilla & Daniel Ng  
The Orndorff Family Foundation  
Melody & Steve O'Shea  
John, Roberta & Barbara Ozanich  
Valerie Pallai  
Roz & John Phillips  
Richard K. Pottratz  
Tina & Scott Radovich  
Amy & Zach Reagle

Doreen Wetzel & Ron Regier  
Susan Ritter  
Terry & Matt Roberts  
Emily Rosten & BK Richard  
Wilda Rosene  
Rotary Club of San Luis Obispo  
Rotary Club of San Luis  
Obispo de Tolosa  
Paula Schroeder & Julie Moody  
Marcia Scott & Grant Elwood  
Anneka Scranton  
Virginia & Charles Senn  
SESLOC Federal Credit Union  
Dr. Bernhard Singens  
JM Smith  
Joanne Smith  
Susan & Tom Stenovc  
Stacy Sullivan  
Gail Tannehill  
Hal & Priscilla Thilmony  
Cindy Green & John Thomas  
Trust Automation,  
Trudie & Ty Safreno  
Bob Garrett  
Mary Blackler & Phil Wagner  
Nancy & Don Walter  
Suzanne Wearle  
Tom Weiss  
Wendy & Crow White  
Christine & Bob Williams  
Minke WinklerPrins  
& Pete Petersen  
Paul & Debbie  
Lagomarsino Woidke  
Janice Fong Wolf  
Sally & Bob Young

### PRINCIPAL PLAYERS

Anonymous  
Doris & George Abraham  
Robert & Patricia Anderson  
Sharon & Jeffrey Armstrong  
Ashkin Family Fund  
Julia & Chris Bockmon  
Manette & Richard Boragno  
Mary Kay & Jay Bornfleth  
Shasta & Tom Brander  
Peggy & Tom Burhenn  
Carol Burkhart  
Ron Burkhart Fund  
Vicki & Howard Carroll  
Skye & Craig Christakos  
Carlyn Christianson  
Jody Hovland & Ron Clark  
Chris & Kathy Davis  
Julie & Richard Dorman  
Judy Hemenway & Jonathan Fellows  
Yvon & Jack Gresser

Victoria Grostick  
Cynthia & David Javitz  
Julie Meyer & Fred Kaseff  
Betsy Kiser  
Sally Kruger  
Janice Langley  
Shannon & Mike Larrabee  
Susie & Mike Miner  
Annie Mohler & William Moseley  
Barbara-Jo Osborne  
Gregory & Virginia Palmer  
The Pillow Family  
Barbara Prouty  
Nicole & Jay Raftery  
Julie & Luke Rawlings  
Julie Rodewald  
Dana & Jenny Shaheen  
Bob & Sandy Simoni  
Jane & Steve Sinton  
Laura & Clint Slaughter  
and Family  
Susan Stern-Pearl  
Clifton & Jane Swanson  
Bert Townsend  
Susan & Craig Updegrove  
Tracie & Rick Ventura  
Laurel Adams Viola  
Suzanne Werle  
Janet Windman  
David Winett  
D. Rosh Wright  
Margo & Russ Zink

### SUPPORTING ROLES

Gary Lawson & Tom Ammon  
Marcy Adams  
Karen Carlisle & Jim Anderson  
Odile Ayrat  
Helen Bailey & Douglas Keeseey  
Barbara Bell  
Nancy Brixey & Gary Brasser  
Donna & Larry Coffey  
Dave Congalton & Kathy Minck  
Jayne & Steve Devencenzi  
Jeff Eidelman ❤️ Sky Bergman  
Bryn Forbes  
Eric Wier & Laura Frank  
Mary & John Frey  
Jim & Elaine Gardiner  
Sandy & Dave Garth  
Carolyn & Kris Gorsuch  
Gina & David Hafemeister  
Linda Halisky  
Gary & Muriel Harkins  
Mary Kay Harrington  
Kris & Craig Hendricks  
Brad & Jacqueline Hinds  
Rod Hoadley  
Deborah Adams & Michael Howard  
Dene Hurlbert  
Suzanne & Ron Levy  
Katie Lichtig  
Yvonne Liu  
Liz & Don Maruska  
Rodger & Kathy Mastako  
Maureen O'Hearn & John McAndrew  
Pam & John McPherson  
Phyllis Momtazee-Snellung  
Laura & Pat Mullen  
Erin Ogren  
Pacific Gas and Electric Co.  
April Paletsas  
Christy & Michael Palmer  
D. Michael & D'Elaine Patrick Fund  
Frank Basich & Andy Pease  
Carolyn Peters  
Greg & Zandi Peters  
Susan Piel  
Bill Plummer  
Andrea & Jeffrey Portney  
Mary Qualls  
Pamela & Rick Racouillat  
Pierre Rademaker Design  
Cynthia & Jonathan Reid  
Paul & Barbara Rose  
Bill & Carol Rust  
Cathy & Steve Ryan  
Elizabeth Stanley-Salazar  
and John Salazar  
Carol Singleton  
Warren & Carol Sinsheimer  
Rosemary Dexter-Smith  
& Richard Smith  
Monica & Stu Soren  
M. Anne Spence  
Gary & Vallerie Steenson  
Elizabeth "Biz" Steinberg  
Alaine & Rich Steuk  
Susan & Steve Stewart  
Jeff Eidelman ❤️ Sky Bergman  
& Matthew Talarico  
Bruce & Sharee Tallerman  
Patty & David Thayer  
Theresa Theiler  
Kenneth & Nancy Thompson  
Edward & Debbie Valentine  
Margie & Larry Weintraub  
Wells Fargo Foundation  
Joe & Myraline Whitaker  
Linda Young  
Paula Sigman & Ron Yukelson  
Ray Ramirez & Gregory Zocher

To view a complete list of donors or to make your online donation, please visit [storep.org.a-new-stage](http://storep.org.a-new-stage). For more information about donor acknowledgement and naming opportunities, please contact: Patty Thayer at (805) 592-3190 / [patty@storep.org](mailto:patty@storep.org).

# Leave a Legacy of Live Theatre for the Future

**Everyone can leave a legacy.** Great or small, planned gifts through your financial or estate plans make a big difference. Your future gift may provide tax benefits for you or your loved ones and will ensure that the enjoyment and enrichment you've experienced at SLO REP is available to our community for years to come.

Please join us in a round of applause for our Legacy Society members whose foresight and generosity will keep live theatre going strong in downtown San Luis Obispo for years to come.

## Legacy Society

Concettina* & Allyn* Arnold	Jeanne & Lawrence Lovelace
Sharynn & Jerry Chirpich	Catherine & Richard Luckett
Jeff McKeegan & Steven deLuque	Pam & Mitch Nichter
Kate Hines & Bryce Engstrom	Wilda Rosene*
Ray* & Jaime Hatler*	Gail Ryff
Brenda & Jules* Hock	Michael & Maryellen Simkins
Bernie & Ed Kurtz	Robert Lahr* & Bruce Stuart*
Lisa Langere	Ben* & Pat* McAdams
Amy Hart & Steven Lloyd-Moffett	William F. Mooney* & Wilbur Wooster*

Choosing the right planned gift depends on your personal circumstances and goals. Please consult your financial advisor, then contact us about joining SLO REP's Legacy Society. Benefits include exclusive invitations to special events, priority seating for all shows with personal assistance from SLO REP staff and a listing in our playbill. If you've already included SLO REP in your future plans, please let us know. We want to honor and celebrate your generous gifts TODAY!

\*deceased

## Building the Future

Thanks to the foresight, generosity, and determination of Dr. Bernhard Singen, SLO REP has established an Endowment Fund for the future of live theatre in downtown SLO. This fund will grow as we grow, providing security and future funding, ensuring that this organization continues to thrive for years to come.

For more information about how you can build the future of live theatre in downtown SLO, please contact **Patty Thayer** at (805) 592-3190 or [patty@slorep.org](mailto:patty@slorep.org).

## Endowment Fund Donors

Catherine & Richard Luckett  
Pam & Mitch Nichter  
Dr. Bernhard Singen

## Special Thanks

### Artist Hospitality Support

Pam & Mitch Nichter  
Ilene Brill  
Ann Robinson  
Liz Frost  
Tina & Scott Radovich

Anneka Scranton  
Ingrid & Carol Siegel  
Elizabeth Stanley Salazar & John Salazar  
Ping & Su Tsao  
Patti Westgate & Tom Wilson

For more information about hosting a SLO REP guest artist, please contact **Suzy Newman**, Production Manager at [suzy@slorep.org](mailto:suzy@slorep.org).



### Contact

Box Office: (805) 786-2440  
[boxoffice@slorep.org](mailto:boxoffice@slorep.org)  
Business Office: (805) 781-3889

### Box Office Hours

Wed-Fri 3 pm – 6 pm  
Show Saturdays 3 pm – 5 pm  
Will Call open 1 hour before every show

### Downtown Venue Address

888 Morro Street  
San Luis Obispo, CA 93401

### Empleo Street Headquarters

3533 Empleo Street  
San Luis Obispo, CA 93401

### Mailing Address

PO Box 122  
San Luis Obispo, CA 93406

## Board of Directors

### Officers

**Pam Nichter**, President  
**Diane Clausen**, Vice-President  
**Debbie Stewart**, Treasurer  
**Michael Simkins**, Secretary & Past President

### Members

<b>Jay Beck</b>	<b>Susan Minker</b>
<b>Jerry Chirpich</b>	<b>Jeff Olds</b>
<b>Keith George</b>	<b>Paul Rose</b>
<b>Bob Hyde</b>	<b>Chip Visci</b>
<b>Richard Luckett</b>	<b>Ellie Washington</b>
<b>Kevin Magon</b>	<b>Jonathan York</b>

### Staff

<b>Kevin Harris</b> Managing Artistic Director	<b>Rachel Tietz</b> Assistant Education Director
<b>Kerry DiMaggio</b> Education Director	<b>Shannon Peters</b> Assistant Education Director & Empleo Office Manager
<b>Patty Thayer</b> Development Director	<b>Katherine Appell</b> ACT Education Coordinator
<b>Suzy Newman</b> Production Manager	<b>Lester Wilson,</b> <b>Carolyn Peters, Carley Quintana, Vincent Lemos, Samantha Nakagaki, Danielle Durbin, Krissie Miller</b> ACT Teaching Artists
<b>Dave Linfield</b> Technical Director/ Scenic Designer	<b>Sonya Jackson,</b> <b>Araceli Peralta Leyva, Abe Lincoln, Layli Veach</b> Assistant House Managers
<b>Brian Lampert</b> Volunteer Coordinator & Front of House Manager	
<b>Carey Blauvelt</b> <b>Cynthia Ford</b> <b>Makenzie Fry</b> Box Office Staff	

## Mission

SLO REP strengthens theatre's cultural influence and enriches the Central Coast by producing professional theatre, nurturing artists and providing theatre education for children and adults.

## Our Belief

Live theatre's powerful storytelling connects people in ways that open the mind, nourish the soul and illuminate our shared humanity.

## Vision

To be a nationally recognized regional theatre that:

- Produces professional theatrical productions in a state-of-the-art facility.
- Strengthens the cultural vitality of the Central Coast, entertains audiences, nurtures artists, and cultivates future generations of theatre enthusiasts.
- Creates a strong and sustainable economic impact, attracting residents and visitors to downtown San Luis Obispo.

## Our Commitment

Theatre plays a vital role in our culture and our community and has a responsibility to enact positive change through its work, practices, educational programs and policies. We at SLO REP are committed to diversity, equity and inclusion in all aspects of our work. To learn more about our commitment to you, our community and to ourselves, please visit our website at [slorep.org](http://slorep.org)

**Land Acknowledgement:** San Luis Obispo Repertory Theatre acknowledges with respect that the place we work and gather is located on the traditional land of the Northern Chumash people.

SLO REP is a proud member of:



**Artwork:** Subplot Studio

**Photos/Video:** RyLo Media Design, Ryan Loyd

RODGERS & HAMMERSTEIN'S

A

# GRAND

Night

FOR SINGING



UP  
NEXT

"A splendiferous show of songs...  
indeed a grand night!"

**JUNE 5 - JUNE 28**